



MAIN CHARACTERISTICS

Builder	Pershing
Built Year	2014
Length	24.98 M / 81'95"
Beam	5.50 M / 18'5"
Draft	1.40 M / 4'58"
Displacement	54.45 tons

3,700,000 EUR 4,340,736 USD*

* Approximate price conversion

DESCRIPTION

Words fail us when we look at a masterpiece, so we have to settle for numbers: over 24 metres long and 5.50 metres wide, with a weight of 56.3 tons that move at the fantastic speed of 45 knots with a 300-mile range. All this while being able to calmly chat in a normal tone of voice because the noise levels have been calculated at 70 dBA. Here is another prestigious statistic: threeWorld Yacht Trophies that heralded its debut at the Festival de La Plaisance in Cannes. So you will understand why this fabulous 82-footer (heir to the Pershing 80) has been called "the missile disguised as a yacht." Setting aside its missile-like turn of speed, let us cite its comfort and other qualities: the sundeck that can be reached with the retractable carbon-fibre stairway, the famous folding and retractable French door that separates the cockpit and lounge, and the luxurious and high-end interiors furnished by Poltrona Frau. Power, comfort and performance are further reflected in the full-speed manoeuvring, which thanks to the Autotrim system is executed without losing a single knot of speed. The excitement turns into pure adrenaline when experienced in the master cabin, where the maxi open-view window ends up underwater due to the heel of the boat, offering you the thrill of a supersonic voyage through the waves. Going back to the numbers, the Pershing 82 has only one drawback: sooner or later you will have to disembark onto dry land.



Address:

3 Rue de la Loge L-1945 Luxembourg



Contact

Thomas Peltier • P: +352.27.40.99.90 • M: +352.621.326.323



E-mail:

t.peltier@seastemia.com

SPECIFICATIONS

BOAT DETAILS

Main Category	Motor yacht	Built Year	2014
Model Year	2014		

BUILDER / DESIGNER

Builder	Pershing	Model	PERSHING 82'
---------	----------	-------	--------------

DIMENSIONS

Length	24.98 M / 81'95"	Beam	5.50 M / 18'5"
Draft	1.40 M / 4'58"	Displacement	54.45 tons
Ballast Weight	54.45 tons		

MACHINERY

Engine Maker	MTU	Drive	Arneson Drive
Number of Engines	2	Propulsion Mode	Diesel



Address:

3 Rue de la Loge L-1945 Luxembourg



Contact

Thomas Peltier • P: +352.27.40.99.90 • M: +352.621.326.323



E-mail:

t.peltier@seastemia.com

MACHINERY

Engine(s) type	Inboard	Engine(s) power	2,435.00 hp
Engine(s) model	MTU 16V 2000 M93	Engine 1 hours	502.00 H.
Main Generator Maker	Kohler	Main Generator Power	20.00 KW
Main Generator Hours	789.00 H.	AC type	Air/Co Super Tropic
AC capacity	150,000.00 BTU		

PERFORMANCES

Cruising Speed	40.00 knots	Max Speed	45.00 knots
-----------------------	-------------	------------------	-------------

TANKAGES

Fuel	5,950.00 liters / 1,570.80 US gals	Water	1,300.00 liters / 343.20 US gals
-------------	------------------------------------	--------------	----------------------------------

ACCOMODATIONS

Sleeps	8 guests	Berths	4 simple
Bathroom	3		



Address:

3 Rue de la Loge L-1945 Luxembourg



Contact

Thomas Peltier • P: +352.27.40.99.90 • M: +352.621.326.323



E-mail:

t.peltier@seastemia.com

COMMUNICATION & NAVIGATION EQUIPMENT

RECREATIONAL EQUIPMENT

ACCESSORIES INSTALLED ONBOARD

- Paint."ALUMINIUMSILVER"hull&superstructure
- Stern thruster hydraulic (28 HP / 20,9 kW)
- Mooring cleats, side, retractable (couple) on the bathing platform
- Safety equipment for 16 people (n. 2 life rafts 8P expiring June 2018 + n. 16 lifejackets) - Diff. from STD
- Underwater lights under the bathing platform
- Antenna TV Sat Navisystem NT65 with decoder
- Inverter 24V/5000W - 50 Hz
- Air/co Super Tropic 150.000 BTU - Diff. from STD
- Aft sun deck backrest electric lifting
- Second helm station + furniture/seat on the Sun Deck

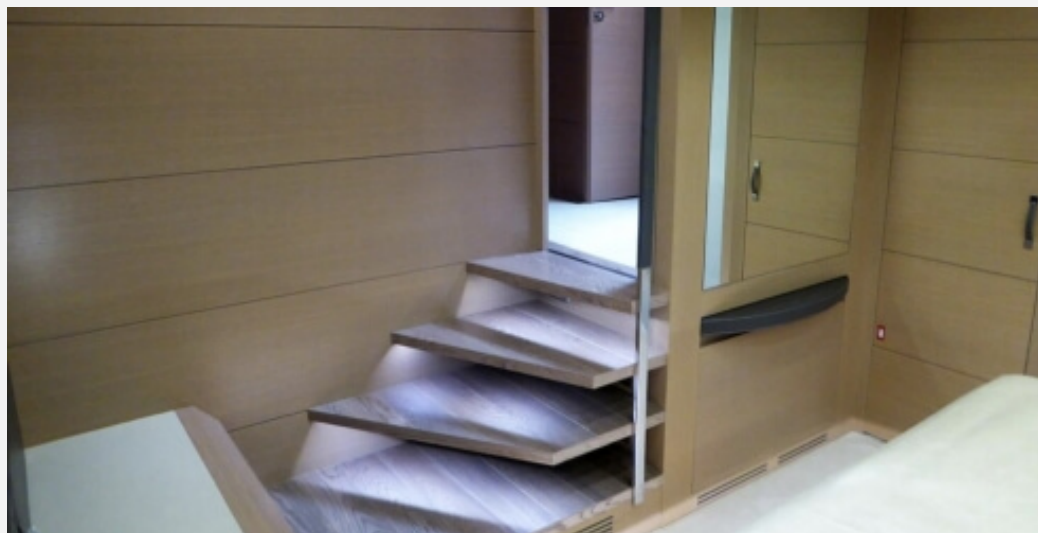
- SIMRAD Open Array Antenna
- Painted GPR table in dinette at bow
- Stainless steel chain - 100 m
- Stainless steel anchor
- Aft camera
- Digital chain counter
- Searchlight electrically controlled (big rectangular)
- Automatic battery charger for both generators
- External socket 12V type with transformer
- External socket 230V watertight
- German Schuko sockets on the whole yacht - Diff. from STD
- Shore cable extension (+10 m) = 25 m
- Electric roll curtains in fabric in Guest cabins starboard and portside
- Electric roll curtains in fabric in VIP cabin
- Black out curtains with electric motion in all cabins (crew cabin not included)
- I-Pod docking stations in all cabins
- Fridge in upper deck salon
- Ice maker in the cockpit
- Decoder TV Sat UE in all the cabins and in the crew area
- Parquet floor on main deck
- Cover for windshield

- Waterproof covers for sunpads, outside sofas and tables
- Shower in VIP bathroom in mosaic
- Shower in GUEST bathroom in mosaic
- Jet-sky winch in the garage + rolls kit
- Stainless steel handle in salon stairs down to kitchen
- Airport Express (WI-FI SYSTEM) in salon
- Apple TV in salon
- Mosquito nets for portholes (n. 14)
- Dimmer lights in cockpit
- Additional loudspeakers in cockpit (2)











LAYOUTS: 4 CABINS + 3 BATHROOMS + 2 CREW CABINS + 1 CREW BATHROOM



Address:

3 Rue de la Loge L-1945 Luxembourg



Contact

Thomas Peltier • P: +352.27.40.99.90 • M: +352.621.326.323



E-mail:

t.peltier@seastemia.com