

21.00 M / 68'90"



MAIN CHARACTERISTICS

Designer	Bertram Yachts
Built Year	2003
Hull Material	GRP
Length	21.00 M / 68'90"
Beam	5.52 M / 18'10"
Draft	1.60 M / 5'25"
Displacement	42.00 tons
Lying	South of France
Registry	England
Tax Status	VAT PAID

695,000 EUR 767,790 USD*

* Approximate price conversion

🏠 Address:

3 Rue de la Loge L-1945 Luxembourg

📞 Contact

Thomas Peltier • P: +352.27.40.99.90 • M: +352.621.326.323

✉ E-mail:

t.peltier@seastemia.com

DESCRIPTION

Welcome in front of a brilliant illustration of the "state of the art" navigation demonstrator back in Ferretti history. The Bertram was and remains from all time highly respected for those "experienced yachtess" and owners, a reference in terms of sea going capabilities, "seaworst" strong and durable design, and practicability; one of the best Deep V-Hulls built and designed for the demanding fishing needs of the Atlantic ocean to confront itself with other US competitors in the segment; in other word it is one of the reference in terms of safety at sea ! This exemple of 63 Convertible is one of the few, perfectly maintained ones, kept in its best original conditions from its second owner who took close attention on her since now 13 years. The yacht was used solely privately with a permanent captain onboard, and kept in winterization in dry docks every seasons. Apart from the stabs, her specification is full and in the best 4 cabins layout, her volumes are gorgeous and comparable in many aspect in much larger actual yachts. All of her systems are running properly with many recent important changes, like fire protection system, batteries... She got several upgrade in the time, notably with an hydraulic platfom added on the stern, the general overall condition is excellent and she is ready to serve again the next owner for years ahead for its best satisfaction!

SPECIFICATIONS

BOAT DETAILS

Main Category	Motor yacht	Boat Status	Brokerage
Built Year	2003	Lying	South of France
Registry	England	Tax Status	VAT PAID

CERTIFICATION

Category	A
-----------------	---

BUILDER / DESIGNER

Designer	Bertram Yachts	Model	BErtram 63 Convertible
Hull Type	Planning Hull	Hull Configuration	Mono Hull
Hull Material	GRP		

DIMENSIONS

Length	21.00 M / 68'90"	Beam	5.52 M / 18'10"
---------------	------------------	-------------	-----------------

DIMENSIONS

Draft	1.60 M / 5'25"	Displacement	42.00 tons
Ballast Weight	42.00 tons		

MACHINERY

Engine Maker	Caterpillar	Drive	Shaft
Number of Engines	2	Propulsion Mode	Diesel
Engine(s) power	1,652.00 hp	Engine(s) model	ACERT C32
Engine 1 hours	1,712.00 H.	Engine 2 hours	1,712.00 H.
Main Generator Maker	Kohler	Main Generator Power	20.00 KW
Main Generator Hours	750.00 H.	Auxiliary Generator Maker	Kohler
Auxiliary Generator Power	20.00 KW	Auxiliary Generator Hours	750.00 H.

TANKAGES

Fuel	5,800.00 liters / 1,531.20 US gals	Water	1,325.00 liters / 349.80 US gals
-------------	------------------------------------	--------------	----------------------------------

ACCOMODATIONS

Sleeps	8 guests	Berths	4 simple, 2 double
---------------	----------	---------------	--------------------

ACCOMODATIONS

Bathroom 3

LAYOUT / INTERIOR

Air Conditioning all along the boat and in each cabins

KITCHEN:

Four Fridges freezers drawers.

Microwave

Dishwasher

cooktop plate 4 burners.

Dining Area

Central Vacuum System

Salon area with Ice Maker

Large storages under the sofa

Ice maker in salon area

COCKPIT:

Large Enclosed cockpit of approx 15m2 with closed Shower

foldable Bimini Taud at the aft

Drawer Freezer

Folding table

BOW:

Sun bathing area at the bow

Fenders Compartment

LOWER DECK:

Wasging machine

Dryer

FLY BRIDGE:

Convertible Dining to Sunpad Table

Electric Opening Rooftop

Full enclosure in a proper condition

Multiple storages areas, for life jacket and more.

Upholstery remade in most of the Yacht



COMMUNICATION & NAVIGATION EQUIPMENT

ELECTRONICS:

Plotter Raymarine C120

Depthsounder Furuno RD30

Radar Detector

Autopilot Simrad AP25

VHF ICOM IC-M601

Radio

CD player

Compass

GPS

2 Electrical Retractable Shore pwer cables of 32 Amp.

HI-FI MEDIAS:

TV Set LED 40" SALON SAMSUNG

SYSTEM HIFI/ SHARP & Bose Lifestyle 5.1

SAT TV KVH Trackvision

TV Set LED 26" in MAster Cabin

Sat Receiver in each cabins

TV Set LED IN Twin Cabin

LCD TV SET in VIP and Second Guest.

RECREATIONAL EQUIPMENT

TENDER:

Annexe Arimar 3.5 meters inflatable 2016 with HB engine Yamaha 5HP









21.00 M / 68'90"



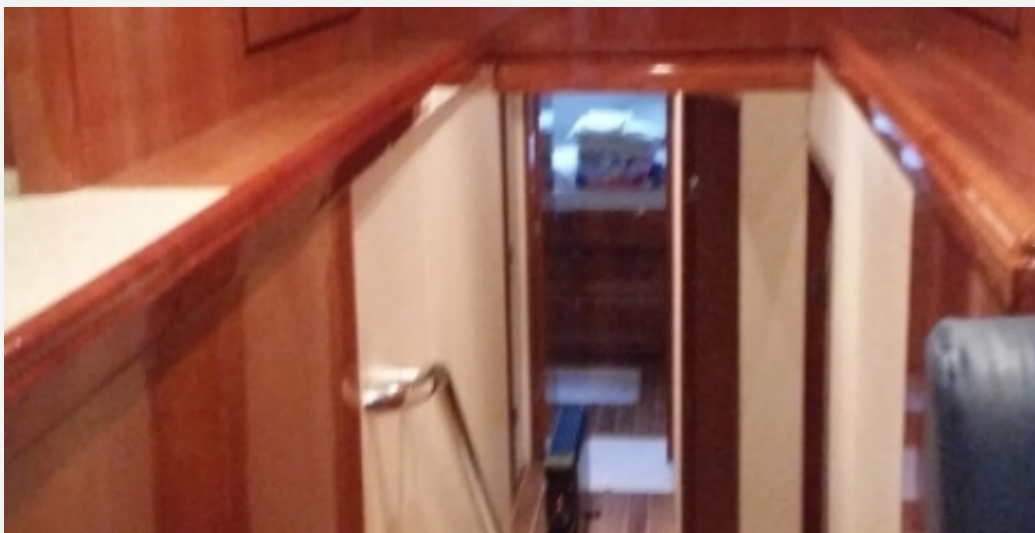










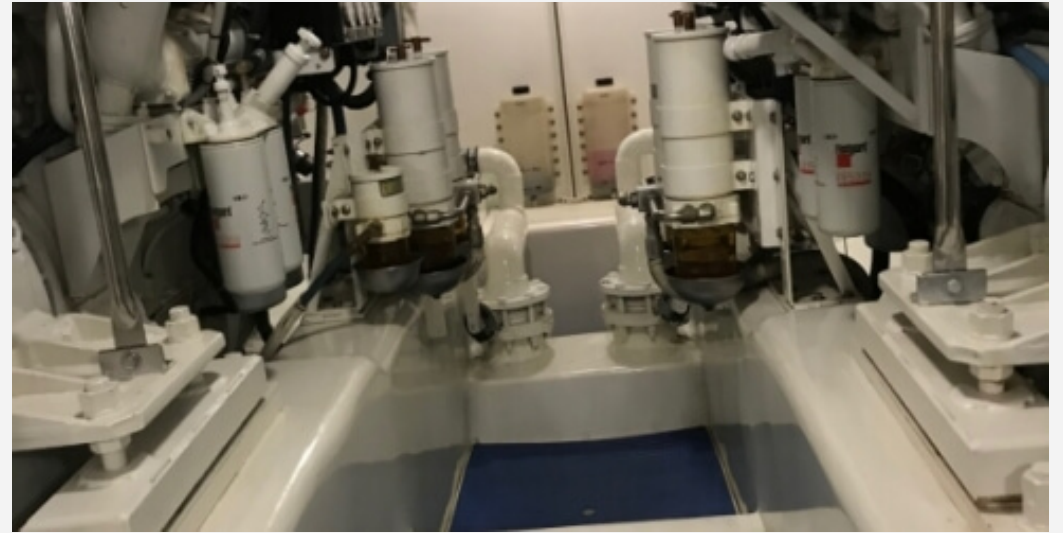


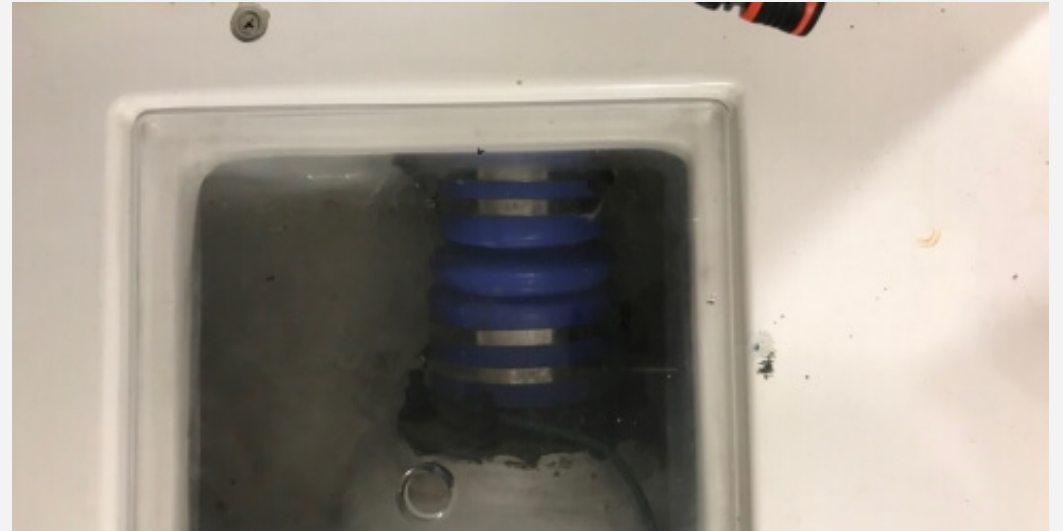














21.00 M / 68'90"

