

26.30 M / 86'29"



## MAIN CHARACTERISTICS

<b>Builder</b>	Dreamline Yachts
<b>Designer</b>	T4 Design Enrico Gobbi
<b>Built Year</b>	2015
<b>Hull Material</b>	GRP
<b>Length</b>	26.30 M / 86'29"
<b>Beam</b>	6.65 M / 21'82"
<b>Draft</b>	1.90 M / 6'23"
<b>Displacement</b>	75.00 tons
<b>Lying</b>	Italy
<b>Registry</b>	England
<b>Tax Status</b>	excl. VAT

**4,100,000 EUR** 4,471,370 USD\*

\* Approximate price conversion

🏠 Address:

3 Rue de la Loge L-1945 Luxembourg

📞 Contact

Thomas Peltier • P: +352.27.40.99.90 • M: +352.621.326.323

✉ E-mail:

t.peltier@seastemia.com

## DESCRIPTION

---

Welcome back in the top range of premium yachting segment with this 26 meters Dreamline launched in 2015! Multiple award winning yacht and model thanks to its innovative design and premium construction quality, the Dreamline 26 is not only a clever owner choice for those who desire the best but it offers even more in terms of volumes, safety and features. Second owner since new, this 4 cabins layout unit with a panoramic Master ensuite on the main deck, and a second full gauge "Master/VIP" cabin in the lower deck and two additional twins. All cabins are equipped with wardrobe and bathrooms to accommodate comfortably 8 guests on a long cruise, in the nicest light luxury atmosphere of T4 Design. Thanks to its semi-planing hull from Arabito, the yacht at 12 knots consumption is no more than 70 liters in total with a range increased to 1400NM, while when needed she can reach a top speed of 23 knots. Raised Pilot House type, full on her spec with two V12 MAN 1400Hp engines of 880 hours each, two 27KW generators, 0 speed and navigation fin stabilizers, garage for a 3.85mtr Williams Jet tender, a very large flybridge with jacuzzi and Paola Lenti loose furniture, and hydraulic aft swimming platform with jetski and hydraulic swimming ladder at the aft, a crew quarter for 5 crew, water maker, etc, etc... A good ready to sail option now offered on the market at 4.5 Mio Euros VAT EXCL.

## SPECIFICATIONS

---

### BOAT DETAILS

<b>Main Category</b>	Motor yacht	<b>Boat Status</b>	Brokerage
<b>Built Year</b>	2015	<b>Lying</b>	Italy
<b>Registry</b>	England	<b>Tax Status</b>	excl. VAT

### CERTIFICATION

<b>Category</b>	A	<b>Compliance</b>	CE Certification Rina pleasure
-----------------	---	-------------------	--------------------------------

### BUILDER / DESIGNER

<b>Builder</b>	Dreamline Yachts	<b>Designer</b>	T4 Design Enrico Gobbi
<b>Naval Architect</b>	Arabito Naval architect	<b>Model</b>	DL26
<b>Hull Material</b>	GRP		

### DIMENSIONS

<b>Length</b>	26.30 M / 86'29"	<b>Beam</b>	6.65 M / 21'82"
---------------	------------------	-------------	-----------------

## DIMENSIONS

<b>Draft</b>	1.90 M / 6'23"	<b>Displacement</b>	75.00 tons
<b>Ballast Weight</b>	75.00 tons		

## MACHINERY

<b>Engine Maker</b>	MAN	<b>Drive</b>	V-Drive
<b>Number of Engines</b>	2	<b>Propulsion Mode</b>	Diesel
<b>Engine(s) power</b>	1,400.00 hp	<b>Engine(s) model</b>	MAN V12-1400CR
<b>Engine 1 hours</b>	885.00 H.	<b>Engine 2 hours</b>	885.00 H.
<b>Main Generator Maker</b>	Kohler	<b>Main Generator Power</b>	28.00 KW
<b>Main Generator Hours</b>	2,300.00 H.	<b>Auxiliary Generator Maker</b>	KOHLER
<b>Auxiliary Generator Power</b>	28.00 KW	<b>Auxiliary Generator Hours</b>	2,200.00 H.
<b>Stabilizer Type</b>	Electrical	<b>Stabilizer Maker</b>	Mitsubishi zero speed and navigation fins
<b>Water Maker</b>	aquamatic	<b>Water Maker Flow</b>	250.00 l/H / 66.00 gal/H
<b>AC type</b>	Tropical		

## PERFORMANCES

<b>Cruising Speed</b>	17.00 knots	<b>Max Speed</b>	23.00 knots
<b>Range</b>	1,400.00 NM	<b>Cruising Speed for Range</b>	12.00 knots

## TANKAGES

<b>Fuel</b>	8,000.00 liters / 2,112.00 US gals	<b>Water</b>	1,400.00 liters / 369.60 US gals
<b>Grey Water</b>	710.00 liters / 187.44 US gals	<b>Black Water</b>	500.00 liters / 132.00 US gals

## ACCOMODATIONS

<b>Sleeps</b>	8 guests	<b>Berths</b>	4 simple, 2 double
<b>Bathroom</b>	4	<b>Crew</b>	5
<b>Crew Berths</b>	5		

## LAYOUT / INTERIOR

- 
- &#1; HARDTOP on Fly
  - &#1; Stereo on Fly
  - &#1; Barbecue with Frigo on Fly
  - Pantry equipment
  - &#1; Ceran Cooking Plate
  - &#1; Microwave / oven
  - &#1; Frigo / Freezer
  - &#1; Dishwasher
  - &#1; Icemaker
  - &#1; Frigo-bar in Salon
  - &#1; Frigo-bar in Owner Cabin
  - &#1; Electr. Blinds or curtains for Salon and Owner Cabin
  - &#1; Ceramic WC automatic flush
  - &#1; Anti Noise Protection under Carpet for Living Area
  - &#1; Safe
  - &#1; Searching Light
  - &#1; Teak in Cockpit, Walkaround, Platform

&#1; Parquet floor in Salon, Dining, Pilothouse and Pantry according the shipyard´s allowances

&#1; Camera Surveillance (Engine room – cockpit – side corridors – fly)

&#1; N° 20 Cushions

&#1; Rain-Cover for all Sunbeds, Chairs and Windscreen

&#1; Fix installed Cockpittable with 5 Wicker Chairs

&#1; Crewcabins 2 cabins 2 bathrooms (4 beds) with Frigo, Cooking plate, Washing Machine/Dryer, N° 2 Radio/CD/DVD, N° 1 TV LEDscreen 24"

&#1; Side Doors in Pantry – Lobby

&#1; Hydraulic Gangway lighted

&#1; N° 2 TV LED screen 46 "in Salon and 40" with folding system in Owner Cabin

TV LED screen 32" in VIP and Guest Cabins - N° 1 in each cabin

&#1; Universal Receiver for SAT-TV – Salon – Owner Cabin – VIP Cabins – Guest Cabins and Crew Cabin

&#1; HIFI System Home Entertainment Denon or similar for Salon – VIP and Guest Cabins

&#1; HIFI System Home Entertainment BOSE lifestyle or similar for Owner Cabin

&#1; Battery System for service – engine – and start circuit (maintenance free gel battery)

&#1; Hydr. Tender Garage with tender lifting system

&#1; N° 2 Inflatable Life-Rafts 2 x 8 Persons

&#1; Safety Equipment

COMMUNICATION & NAVIGATION EQUIPMENT

---



N° 2 Generator 2 x 27 kW 230 V 50 Hz

&#1; Air-condition

&#1; Control display 15" (touchscreen) for all ship systems N°1 pilothouse

&#1; Control display (touchscreen) for engines N°2 pilothouse N°2 Fly

&#1; Autopilot Simrad or similar Pilothouse and Fly

&#1; N° 3 Raymarine GS 165 or similar (for Radar / GPS Plotter /Depthfinder / Video) N° 2 Pilothouse and N° 1 Fly

&#1; N° 2 Joystick follow up Pilothouse and Fly

&#1; N° 2 VHF Pilothouse and Fly

&#1; Portable VHF with Recharge Cockpit

&#1; Interphone

&#1; N° 4 Raymarine i70 (Log/echosounder/electr. compass/windindicator) or similar Pilothouse

&#1; N° 2 Raymarine i70 (Log/echosounder/electr. compass/windindicator) or similar Fly

&#1; N° 1 hydr. adjustable Pilot Seat in Pilothouse

&#1; Holding Tank

&#1; Automatic Antifire System

&#1; N° 2 Double Racor Fuel Filters

&#1; Hydraulic Bathing Ladder

&#1; Electron. Gas-Gearshift Mannesmann or similar

&#1; Anchor-Winch

&#1; Anchor Washing

&#1; N° 2 Winches in Cockpit

&#1; Bowthruster 30 hp hydraulic



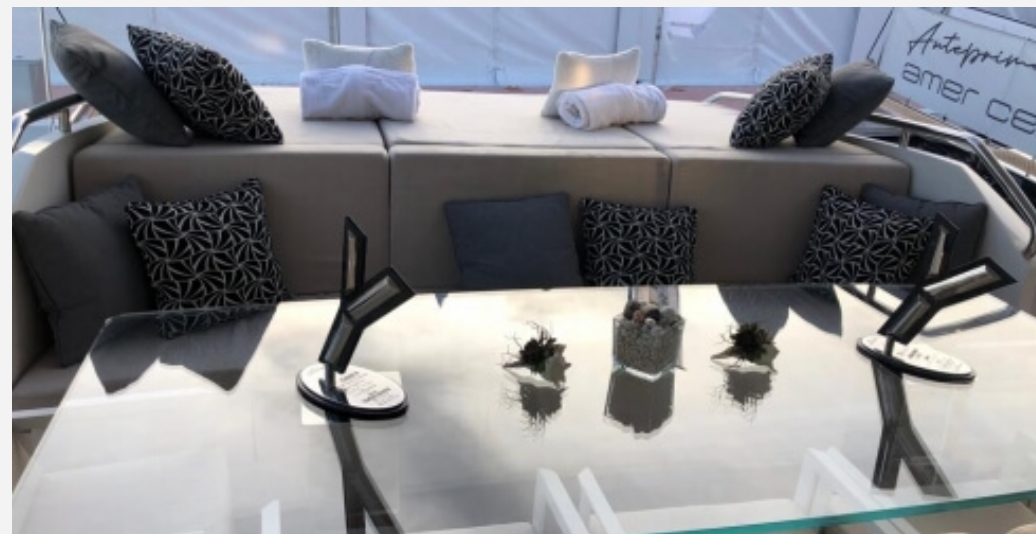


26.30 M / 86'29"





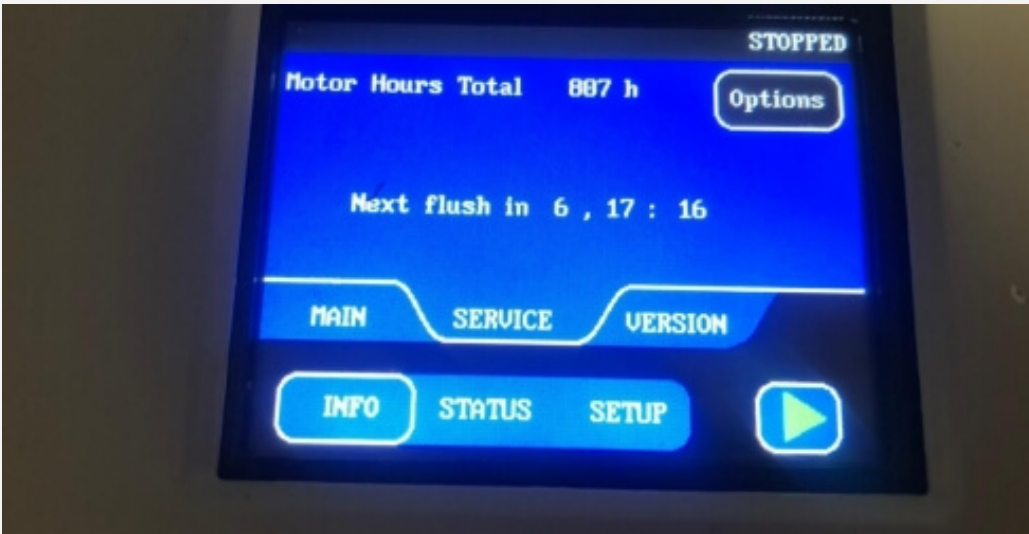
26.30 M / 86'29"







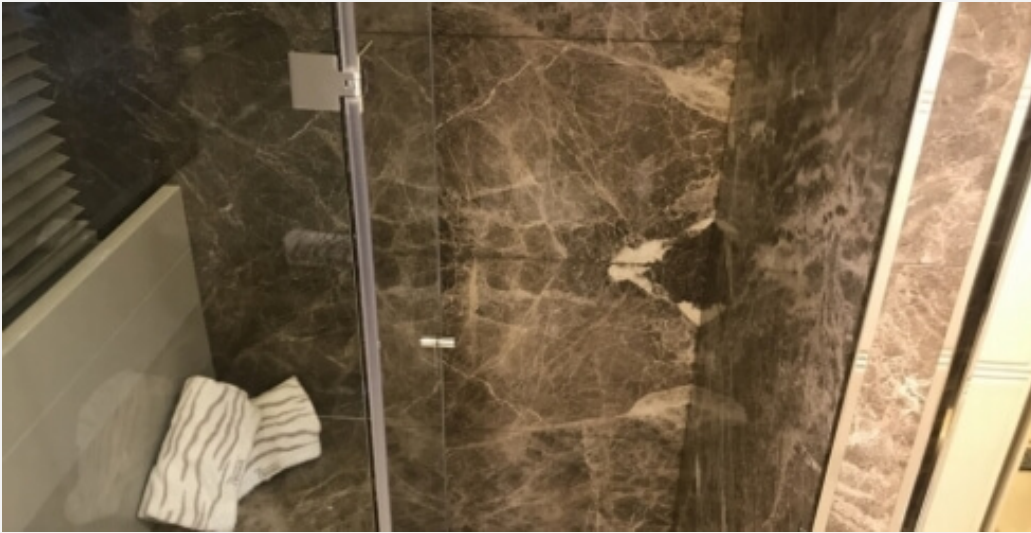
26.30 M / 86'29"





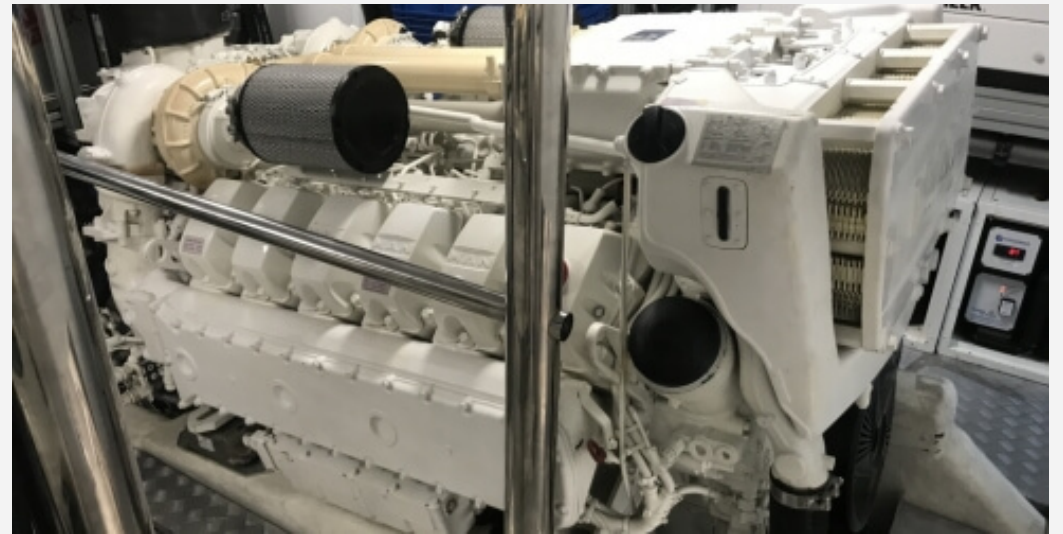
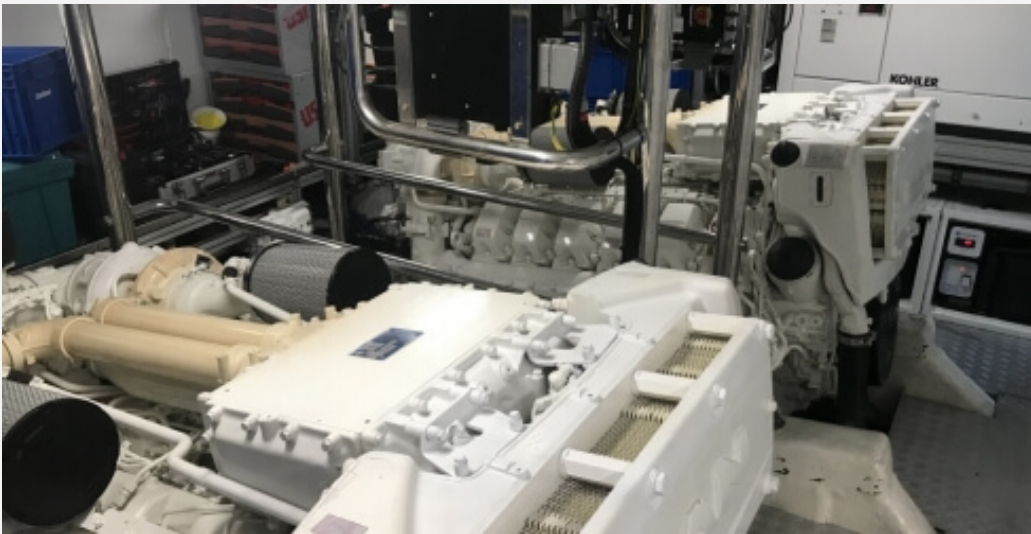








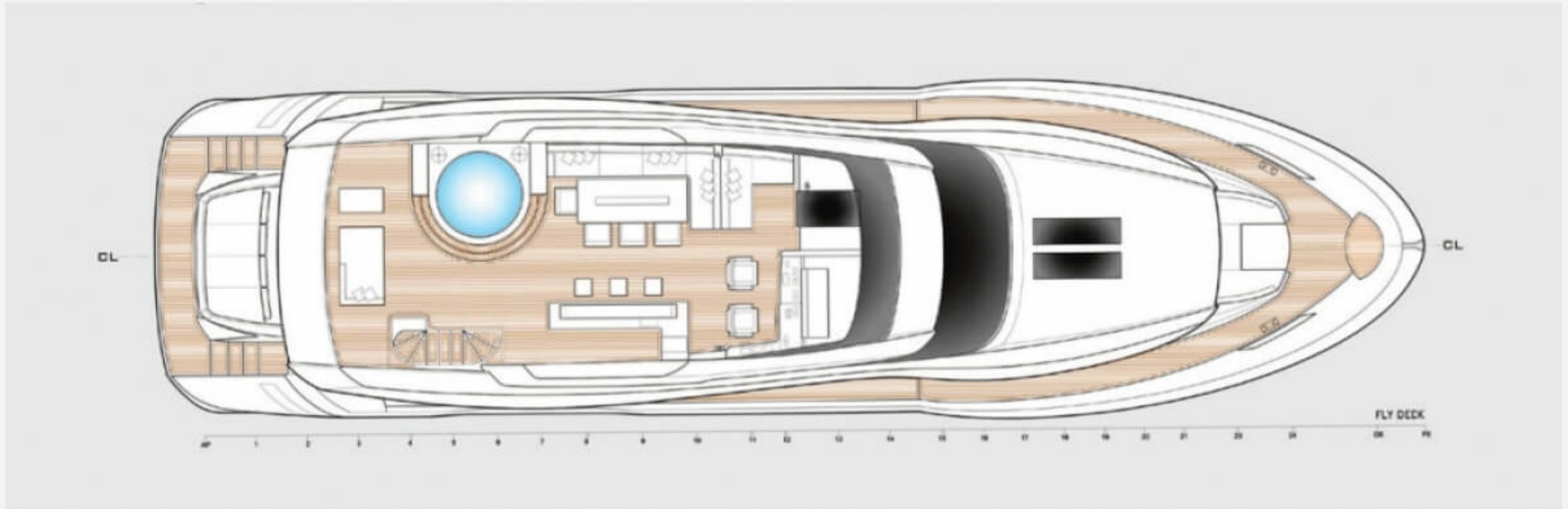
26.30 M / 86'29"



26.30 M / 86'29"







26.30 M / 86'29"

