

25.81 M / 84'68"



CARACTÉRISTIQUES PRINCIPALES

Builder	Feadship
Designer	Kees van den Hoek & Feadship
Built Year	1969
Refit Year	2012
Length	25.81 M / 84'68"
Beam	5.87 M / 19'26"
Draft	2.13 M / 6'99"
Displacement	100.00 tonnes
Registry	Angleterre

2,990,000 EUR 3,499,777 USD*

* Conversion approximative

🏠 Adresse:

3 Rue de la Loge L-1945 Luxembourg

📞 Contact

Thomas Peltier • P: +352.27.40.99.90 • M: +352.621.326.323

✉ E-mail:

t.peltier@seastemia.com

25.81 M / 84'68"

SPÉCIFICATIONS

DÉTAILS DU BATEAU

Built Year	1969	Refit Year	2012
Registry	Angleterre		

CERTIFICATION

Compliance	commercial registration
-------------------	-------------------------

BUILDER / DESIGNER

Builder	Feadship	Designer	Kees van den Hoek & Feadship
Naval Architect	Feadship	Hull Type	Displacement

DIMENSIONS

Length	25.81 M / 84'68"	Beam	5.87 M / 19'26"
Draft	2.13 M / 6'99"	Displacement	100.00 tonnes



Adresse:

3 Rue de la Loge L-1945 Luxembourg



Contact

Thomas Peltier • P: +352.27.40.99.90 • M: +352.621.326.323



E-mail:

t.peltier@seastemia.com

25.81 M / 84'68"

MACHINERY

Engine Maker		Drive	Shaft
Number of Engines	2	Propulsion Mode	Diesel
Engine(s) power	245.00 hp	Engine(s) model	Eight cylinders flat
Heures moteur 1	3,900.00 H.	Heures moteur 2	4,400.00 H.
Gearboxes/Transmission	Manual Gearbox	Main Generator Maker	Caterpillar C 2.2
Main Generator Power	27.00 KW	Main Generator Hours	6,380.00 H.
Stabilizer Maker	Wesmar stabilizer system	Water Maker	Idromar
Water Maker Flow	124.00 l/H / 32.74 gal/H	AC type	Marix rpm regulated air-condition system

PERFORMANCES

Cruising Speed	10.00 noeuds	Max Speed	12.00 noeuds
Range	2,100.00 NM	Cruising Speed for Range	10.00 noeuds

TANKAGES

Fuel	8,500.00 litres / 2,244.00 US gals	Water	3,000.00 litres / 792.00 US gals
-------------	------------------------------------	--------------	----------------------------------



Adresse:

3 Rue de la Loge L-1945 Luxembourg



Contact

Thomas Peltier • P: +352.27.40.99.90 • M: +352.621.326.323



E-mail:

t.peltier@seastemia.com

TANKAGES

Holding 660.00 litres / 174.24 US gals

ACCOMODATIONS

Sleeps	8 guests	Couquette	2 simple, 3 double
Bathroom	3	Crew	4
Crew Berths	4		



Adresse:

3 Rue de la Loge L-1945 Luxembourg



Contact

Thomas Peltier • P: +352.27.40.99.90 • M: +352.621.326.323



E-mail:

t.peltier@seastemia.com

25.81 M / 84'68"



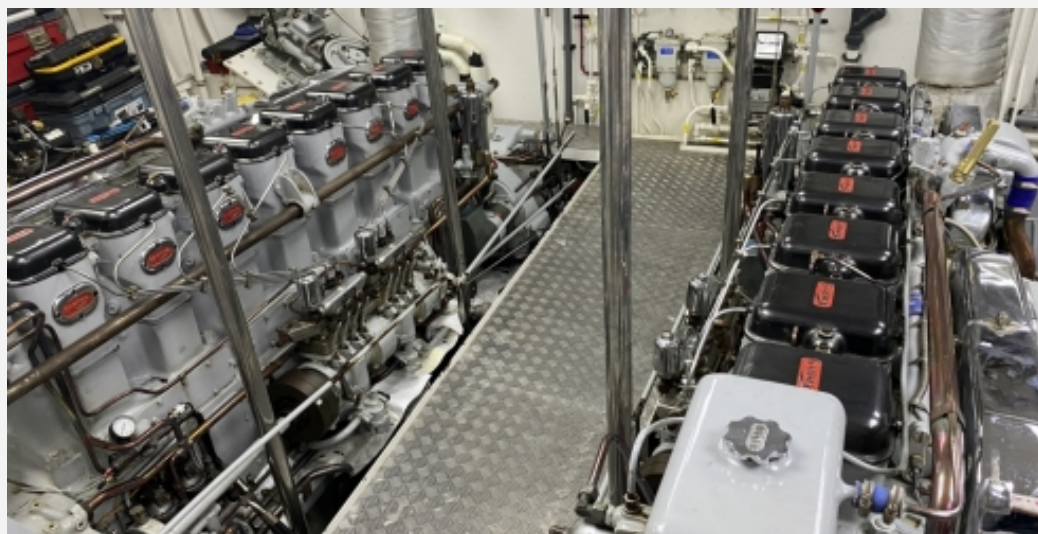
25.81 M / 84'68"



25.81 M / 84'68"



25.81 M / 84'68"

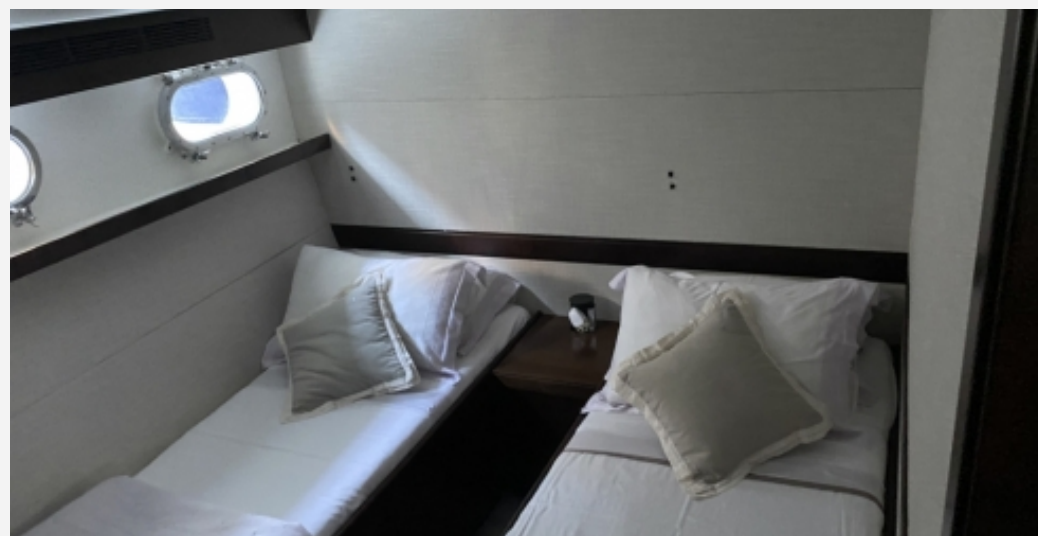
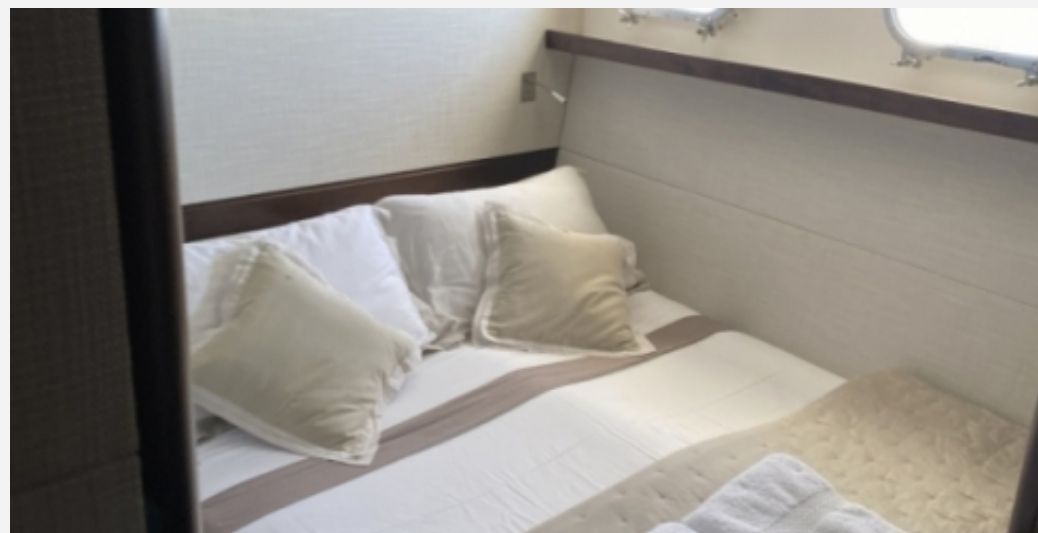




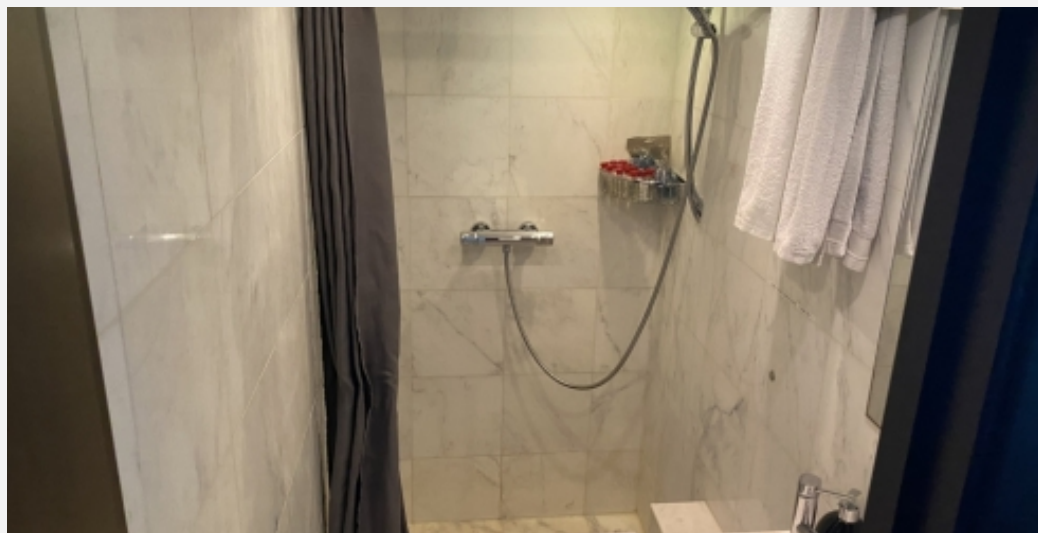


25.81 M / 84'68"

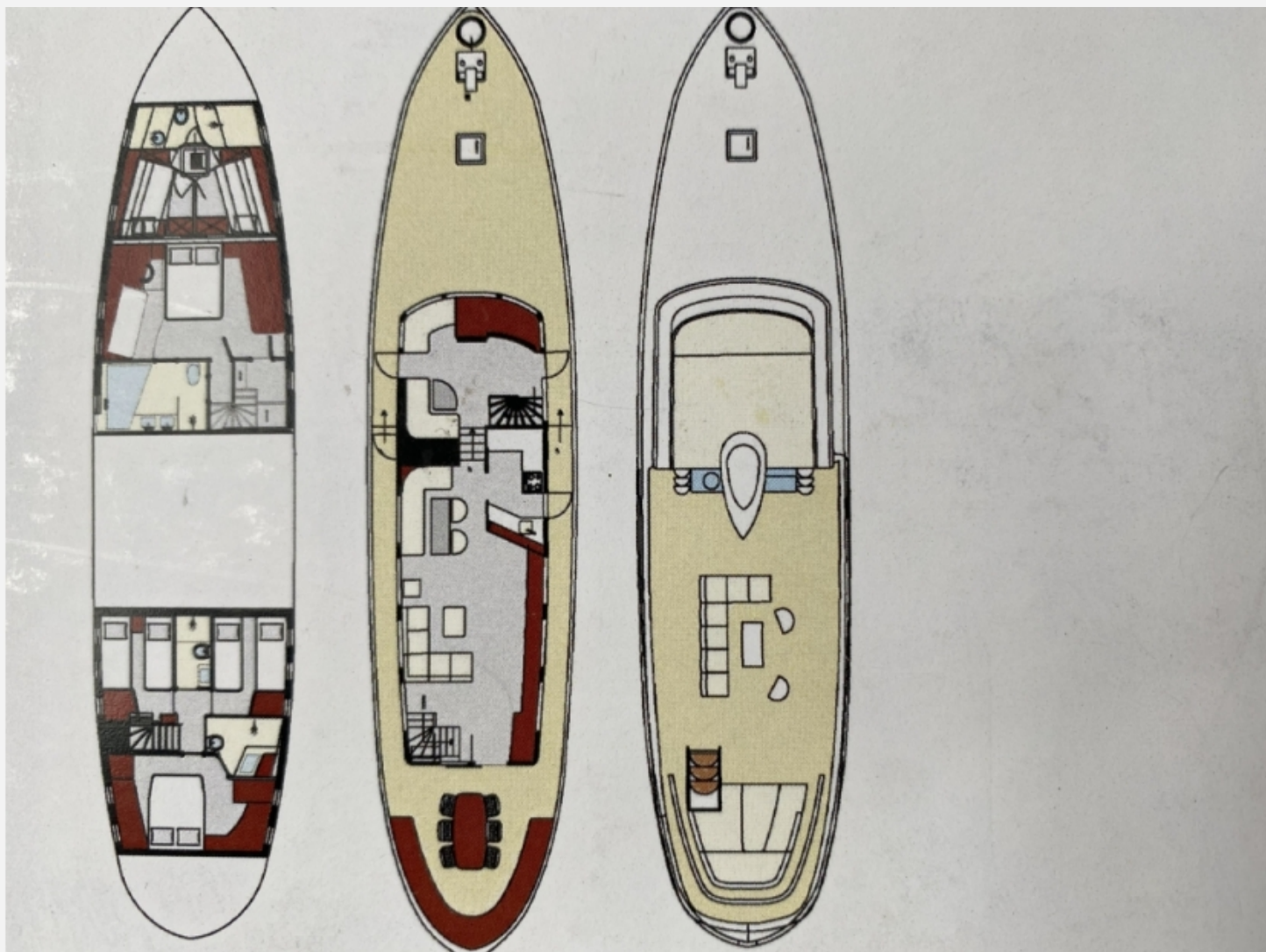




25.81 M / 84'68"



25.81 M / 84'68"



Adresse:

3 Rue de la Loge L-1945 Luxembourg



Contact

Thomas Peltier • P: +352.27.40.99.90 • M: +352.621.326.323



E-mail:

t.peltier@seastemia.com