



MAIN CHARACTERISTICS

Builder	Baglietto
Designer	Francesco Paszkowski
Built Year	2015
Hull Material	Steel
Length	46.30 M / 151'90"
Beam	9.50 M / 31'17"
Draft	3.95 M / 12'96"
Lying	Italy, Livourne

15,990,000 EUR 16,483,691 USD*

* Approximate price conversion

🏠 Address:

3 Rue de la Loge L-1945 Luxembourg

📞 Contact

Thomas Peltier • P: +352.27.40.99.90 • M: +352.621.326.323

✉ E-mail:

t.peltier@seastemia.com

DESCRIPTION

Built by Italian yard Baglietto in 2015, this yacht is a full displacement steel and aluminium yacht, designed by Francesco Paszkowski. Large outdoor spaces are complemented by a voluminous and elegantly styled interior, featuring fine woods, neutral soft furnishings and silk carpets. Able to welcome up to 10 guests, with 9 crew on board, the yacht has 5 luxurious guest cabins including an impressive full master suite, 2 VIP cabins and 2 twins. The master is a beautiful space that includes his and hers bathrooms, a private study and a dressing room. The Baglietti 151 is a high-quality European-built yacht that is perfect for entertaining or simply enjoying life on the sea in luxurious comfort. Please, contact us for more information.

SPECIFICATIONS

BOAT DETAILS

Main Category	Mega yacht	Built Year	2015
Lying	Italy, Livourne		

CERTIFICATION

Certification	Bureau veritas	Category	A
----------------------	----------------	-----------------	---

BUILDER / DESIGNER

Builder	Baglietto	Designer	Francesco Paszkowski
Hull Type	Displacement	Hull Material	Steel

DIMENSIONS

Length	46.30 M / 151'90"	Beam	9.50 M / 31'17"
Draft	3.95 M / 12'96"		

MACHINERY

Engine Maker	Caterpillar	Drive	Shaft
Propulsion Mode	Diesel	Engine(s) type	Inboard
Engine(s) power	1,977.00 hp	Engine(s) model	2 x Caterpillar 3512B DITA - SWAC
Engine 1 hours	964.00 H.	Gearboxes/Transmission	2 x ZF 4661 - ratio 4.06
Main Generator Maker	2 x Kohler	Main Generator Power	125.00 KW
Auxiliary Generator Maker	Kohler	Auxiliary Generator Power	55.00 KW

PERFORMANCES

Cruising Speed	12.00 knots	Max Speed	16.00 knots
Range	4,500.00 NM		

TANKAGES

Fuel	80,000.00 liters / 21,120.00 US gals	Water	19,000.00 liters / 5,016.00 US gals
-------------	--------------------------------------	--------------	-------------------------------------

ACCOMODATIONS

Sleeps	10 guests	Berths	2 simple, 3 double
---------------	-----------	---------------	--------------------

ACCOMODATIONS

Bathroom	5	Crew	9
Crew Berths	9		

LAYOUT / INTERIOR

- Master Suite with Master's Office on Main deck
- 2 x VIP Suites
- 2 x Twin convertible to Double on Lower Deck

COMMUNICATION & NAVIGATION EQUIPMENT

Communication Equipment :

- SatCom (s) : SeaTel 3612 VSAT
- Satellite TV System : SeaTel 4004
- Telephone System : Panasonic Digital Hybrid w/ 23 extensions
- SSB : Sailor 6301 MF/HF (Pilothouse)
- VHF Fixed : (2) Sailor RT6222 DSC Class A (Pilothouse); (1) Sailor RT6215 DSC Class D (Crew)
- SatCom : Sailor 6006 GMDSS Message Terminal (Pilothouse)
- Intercom System : Off Ships Phone System
- Cellular Phone System : Tetular SX 6 GMS/GPRS
- Ships Computer : Yes
- Printer Epson XP-720 (Pilothouse)
- Internal Comm System : Vingator ETB-5 (4 stations)

Navigation Equipment :

- Radar 1 : Furuno FR-2117 BB X Band @ 96nm w/ ARPA (Pilothouse)
- Radar 2 : Furuno NavNet 3D X Band @ 64nm w/ ARPA (Pilothouse)
- Autopilot : Simrad AP 70 (Pilothouse)
- Gyrocompass : Simrad AR80 (Pilothouse)
- Compass : Cantalupi
- Depth Sounders ; Skipper GDS 101 (Pilothouse)
- Video sounder : Furuno NavNet 3D (Pilothouse)
- GPS (2) : Furuno GPS Navigator 150 (Pilothouse)
- Plotter : Software : Transas
- NavTex : Furuno NX 700-B (Pilothouse)

- AIS : Transis M-3 (Pilothouse)
- Wind indicator : Furuno RD-33 (Pilothouse)
- Speed indicator : Furuno RD-33 (Pilothouse)
- Miscellaneous (4) : 19' Hatteland Monitors (Pilothouse); CCTV System w/ (4) Cameras (Port & Stdb sidedecks; Engine Room; Aft Deck)



RECREATIONAL EQUIPMENT

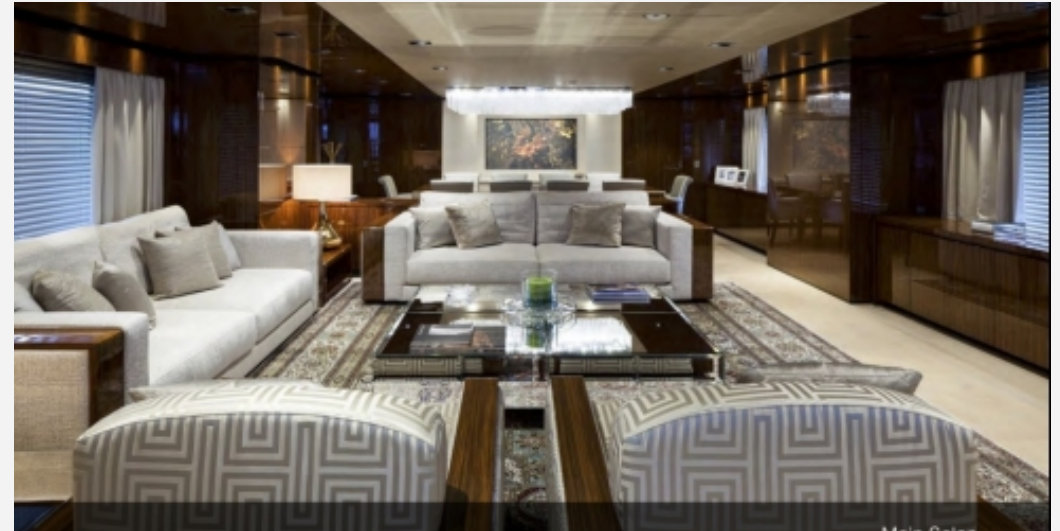
- Castoldi tender 5.5M with 26 hours
- Castoldi tender 4.7M with 44 hours
- 2 x SeaDSoo











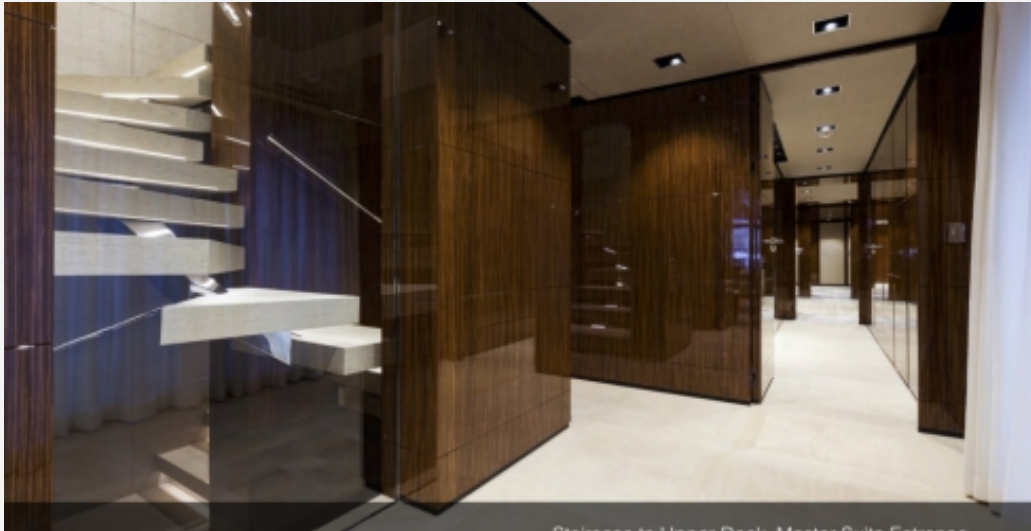












Staircase to Upper Deck, Master Suite, Entrance



Master Suite



Master Suite looking port side



