

27.15 M / 89'7"



## MAIN CHARACTERISTICS

<b>Builder</b>	Van Der Valk - Shipyard
<b>Designer</b>	Guidot de Groot
<b>Built Year</b>	2018
<b>Hull Material</b>	Steel Hull Aluminum superstructure
<b>Length</b>	27.15 M / 89'7"
<b>Beam</b>	6.64 M / 21'78"
<b>Draft</b>	1.72 M / 5'63"
<b>Lying</b>	SOF
<b>Registry</b>	Malta
<b>Tax Status</b>	vat paid

**5,950,000 EUR** 6,488,939 USD\*

\* Approximate price conversion

🏠 Address:

3 Rue de la Loge L-1945 Luxembourg

📞 Contact

Thomas Peltier • P: +352.27.40.99.90 • M: +352.621.326.323

✉ E-mail:

t.peltier@seastemia.com

## DESCRIPTION

---

Discover every possibility. Leave behind your troubles. This robust and sturdy 27m explorer Explorer is for those who live a life of many facets and remains below 24m load line, for pleasure registry. People who know that anything is possible. Where will you go? Contemporary go-anywhere yacht for transatlantic passages and tough weather. Masculine long-range design by Guido de Groot performs as well as it looks. Add in a balanced al fresco lifestyle that's great for everyone onboard and you have it all. Head to places that intrigue you most. In style, at speed and in all-aluminium comfort. Find your favourite spot then switch on the zero-speed gyroscopic stabilisation to enjoy the views. There's so much to see and explore in this big wide world of ours. First owner and VAT PAid for this trouble free well specified and allround explorer from 2018, now rightly priced and newly arrived on the market. Please contact us for more information

## SPECIFICATIONS

### BOAT DETAILS

<b>Boat Status</b>	Brokerage	<b>Built Year</b>	2018
<b>Lying</b>	SOF	<b>Registry</b>	Malta
<b>Tax Status</b>	vat paid		

### BUILDER / DESIGNER

<b>Builder</b>	Van Der Valk - Shipyard	<b>Designer</b>	Guidot de Groot
<b>Hull Type</b>	Semi Displacement	<b>Hull Configuration</b>	Mono Hull
<b>Hull Material</b>	Steel Hull Aluminum superstructure		

### DIMENSIONS

<b>Length</b>	27.15 M / 89'7"	<b>Beam</b>	6.64 M / 21'78"
<b>Draft</b>	1.72 M / 5'63"		

### MACHINERY

<b>Engine Maker</b>	Caterpillar	<b>Drive</b>	Shaft
---------------------	-------------	--------------	-------

### MACHINERY

<b>Number of Engines</b>	2	<b>Propulsion Mode</b>	Diesel
<b>Engine(s) power</b>	390.00 hp	<b>Engine(s) model</b>	C12 ACERT
<b>Engine 1 hours</b>	1,300.00 H.	<b>Engine 2 hours</b>	1,300.00 H.
<b>Gearboxes/Transmission</b>	ZF360	<b>Main Generator Maker</b>	Caterpilalr
<b>Main Generator Power</b>	28.00 KW	<b>Auxiliary Generator Maker</b>	Caterpillar
<b>Stabilizer Type</b>	Gyroscopic	<b>Stabilizer Maker</b>	SEAKEEPER 35
<b>Water Maker</b>	Aquamatic Searecovery	<b>Water Maker Flow</b>	285.00 l/H / 75.24 gal/H
<b>AC type</b>	Clion Marine Tropical autoreverse cooling and heating	<b>AC capacity</b>	178,000.00 BTU

### PERFORMANCES

<b>Cruising Speed</b>	11.00 knots	<b>Max Speed</b>	14.00 knots
<b>Range</b>	3,000.00 NM		

### TANKAGES

<b>Fuel</b>	12,760.00 liters / 3,368.64 US gals	<b>Water</b>	2,500.00 liters / 660.00 US gals
-------------	-------------------------------------	--------------	----------------------------------

### TANKAGES

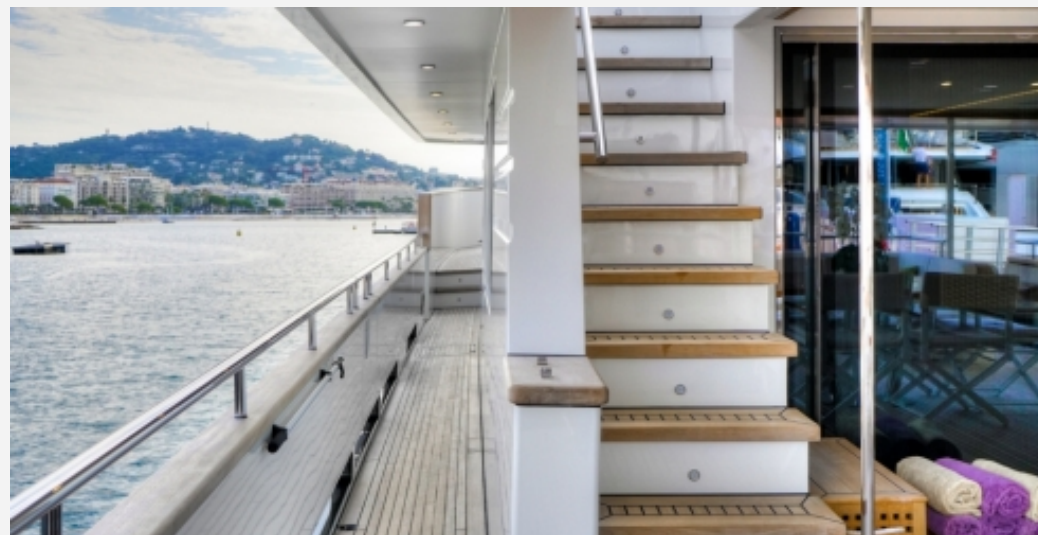
**Holding** 2,000.00 liters / 528.00 US gals

### ACCOMODATIONS

<b>Sleeps</b>	8 guests	<b>Berths</b>	2 simple, 3 double
<b>Bathroom</b>	3	<b>Crew</b>	3
<b>Crew Berths</b>	3		

27.15 M / 89'7"





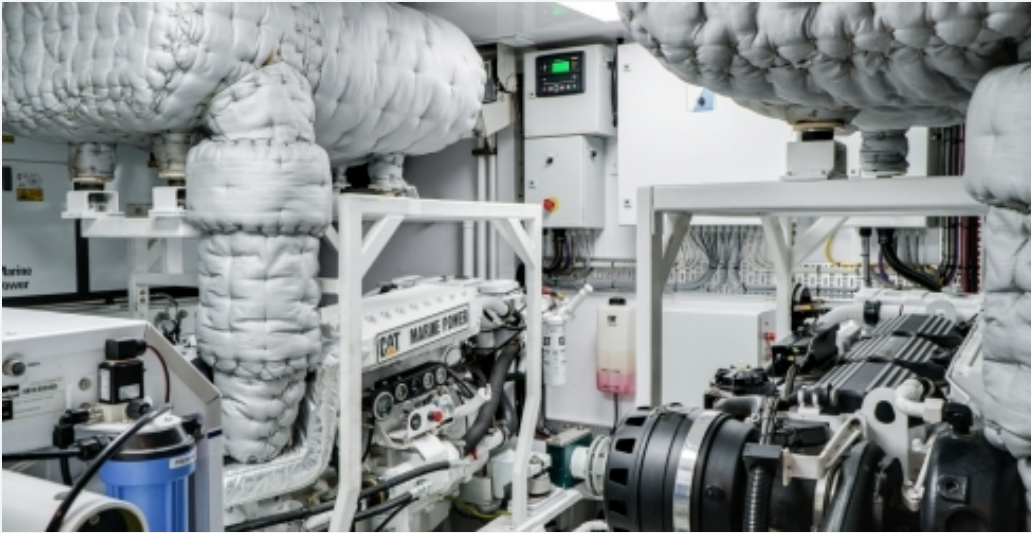












27.15 M / 89'7"

