



### MAIN CHARACTERISTICS

Length	26.84 M / 88'6"
Beam	6.29 M / 20'64"
Draft	1.82 M / 5'96"
Displacement	64.50 tons

# POA

\* Approximate price conversion

🏠 Address:

3 Rue de la Loge L-1945 Luxembourg

📞 Contact

Thomas Peltier • P: +352.27.40.99.90 • M: +352.621.326.323

✉ E-mail:

t.peltier@seastemia.com

## DESCRIPTION

---

Johann Wolfgang Goethe wrote that: "Perfection is the measure of heaven, and the wish to be perfect the measure of man." This may be why Mauro Micheli, from Officina Italiana Design, and the Ferretti Group designers decided to perfect a highly successful boat, the 86' Domino, of which as many as twenty have been produced and sold worldwide. It was thus not just a restyling exercise but a meticulous design process that led to the creation of the 88' Domino Super, a planing prodigy measuring 26.84 metres in overall length and 6.30 metres in maximum width. With so many innovative features, both functional and aesthetic, this yacht will be difficult to perfect (but as Goethe teaches us, Riva's designers are bound to try to, sooner or later). One is immediately struck by its sleek and aerodynamic profile, further enhanced by the original colour of the hull, a dark shade of grey named "London Grey", also chosen for several details on the deck, creating a charming contrast with the pale grey ("Moon Grey") of the superstructure. On board, the spaces themselves have been redesigned, with many advantages for yacht owners, guests and crew members. The new sun deck, for instance, enhances the sportiness of the craft while at the same time offering comfort and pleasure to guests; and the open air control station, which has been shifted to the centre of the boat, is very compact and features a roomy, comfortable sofa forward. A strong sense of dynamism and radiance is produced by the single large window on the hull, with its very bold design pointing like an arrow from the middle of the boat through to the foredeck. The stern area, too, has been completely revamped, offering countless amenities to guests and great advantages to the crew as well. And since at Riva everything is conceived with comfort in mind, two Seakeeper stabilizers to facilitate mooring can be installed on the yacht at the customer's request.



Address:

3 Rue de la Loge L-1945 Luxembourg



Contact

Thomas Peltier • P: +352.27.40.99.90 • M: +352.621.326.323



E-mail:

t.peltier@seastemia.com

### SPECIFICATIONS

#### DIMENSIONS

<b>Length</b>	26.84 M / 88'6"	<b>Beam</b>	6.29 M / 20'64"
<b>Draft</b>	1.82 M / 5'96"	<b>Displacement</b>	64.50 tons
<b>Ballast Weight</b>	64.50 tons		

#### MACHINERY

<b>Engine Maker</b>	MTU	<b>Drive</b>	V-Drive
<b>Number of Engines</b>	2	<b>Propulsion Mode</b>	Diesel
<b>Engine(s) power</b>	2,638.00 hp	<b>Engine(s) model</b>	MTU 12V2000 M96L
<b>Gearboxes/Transmission</b>	ZF		

#### PERFORMANCES

<b>Cruising Speed</b>	37.00 knots	<b>Max Speed</b>	40.00 knots
<b>Range</b>	320.00 NM		



Address:

3 Rue de la Loge L-1945 Luxembourg



Contact

Thomas Peltier • P: +352.27.40.99.90 • M: +352.621.326.323



E-mail:

t.peltier@seastemia.com

## TANKAGES

<b>Fuel</b>	7,500.00 liters / 1,980.00 US gals	<b>Water</b>	990.00 liters / 261.36 US gals
-------------	------------------------------------	--------------	--------------------------------

## ACCOMODATIONS

<b>Sleeps</b>	8 guests	<b>Berths</b>	2 simple, 3 double
<b>Bathroom</b>	4	<b>Crew</b>	2
<b>Crew Berths</b>	2		



Address:

3 Rue de la Loge L-1945 Luxembourg



Contact

Thomas Peltier • P: +352.27.40.99.90 • M: +352.621.326.323



E-mail:

t.peltier@seastemia.com















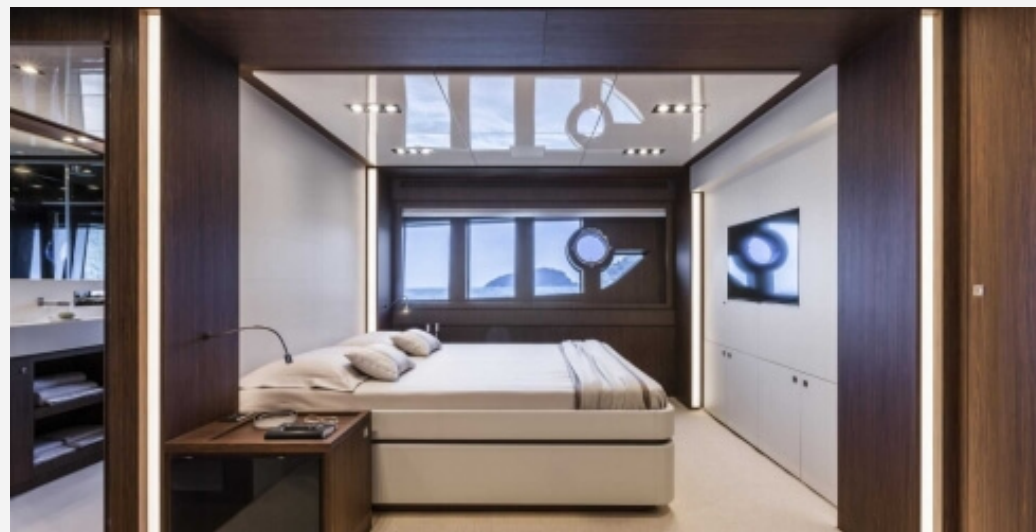






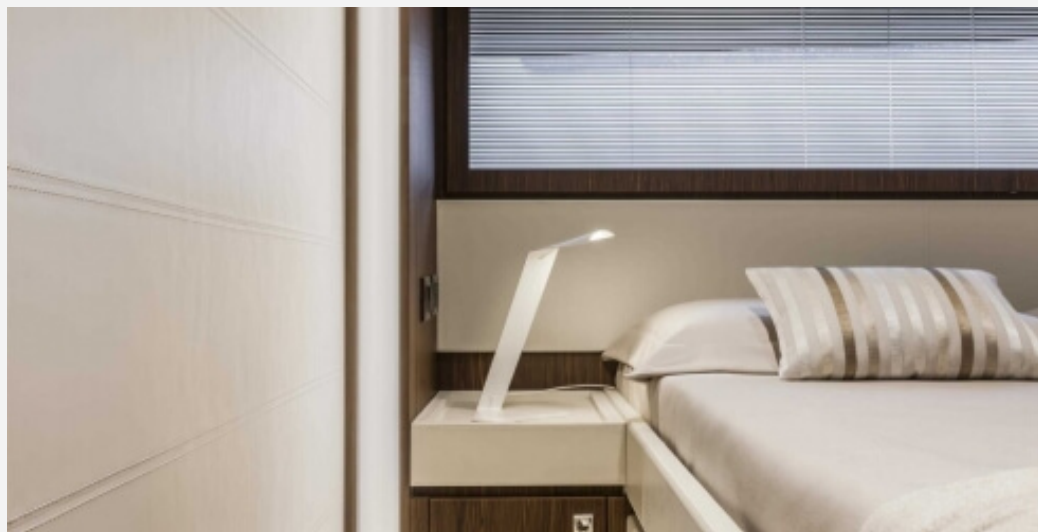






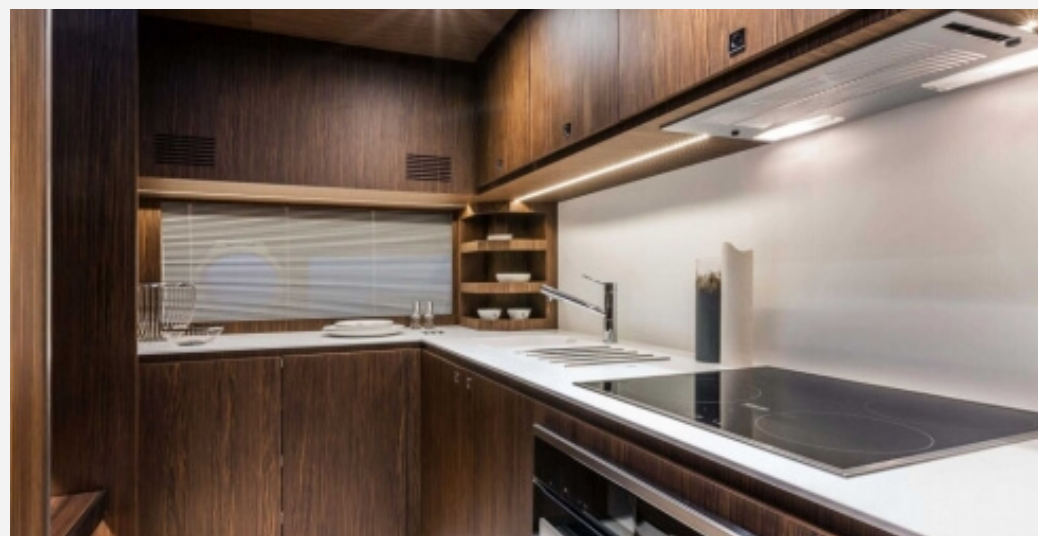








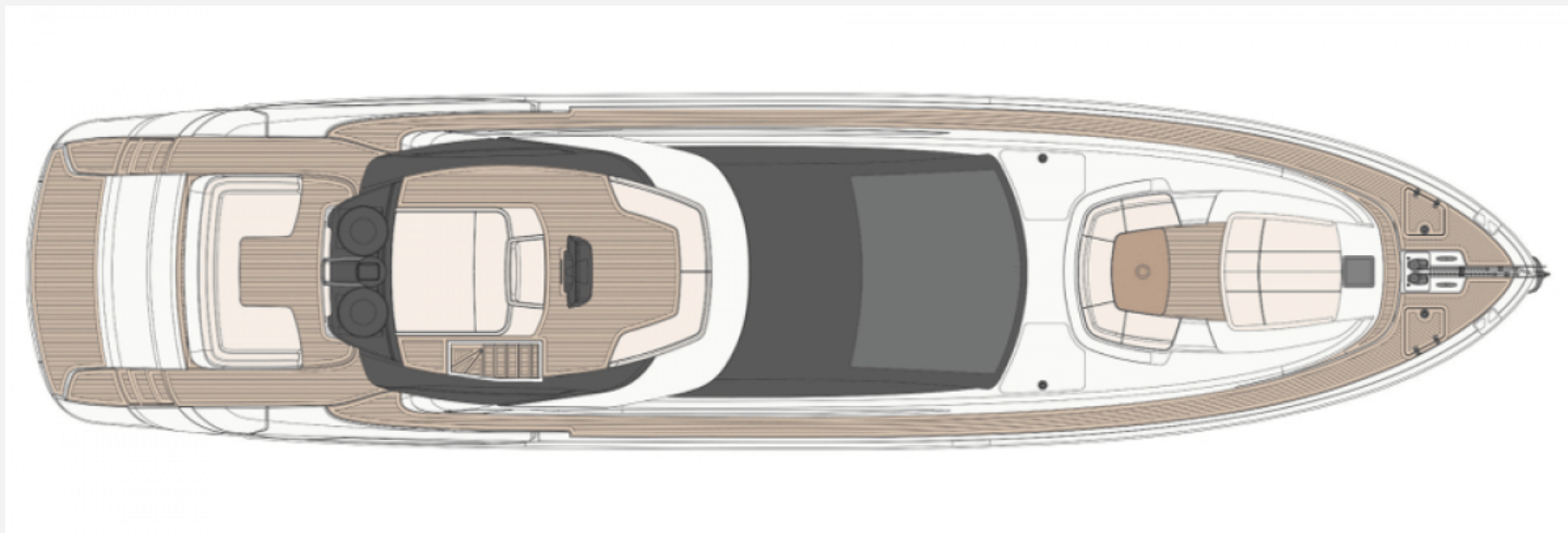












Address:

3 Rue de la Loge L-1945 Luxembourg



Contact

Thomas Peltier • P: +352.27.40.99.90 • M: +352.621.326.323



E-mail:

t.peltier@seastemia.com



