



## MAIN CHARACTERISTICS

Builder	San Lorenzo
Built Year	2010
Length	26.75 M / 87'76"
Beam	6.75 M / 22'14"
Draft	2.15 M / 7'4"
Tax Status	VAT Paid

# POA

\* Approximate price conversion

🏠 Address:

3 Rue de la Loge L-1945 Luxembourg

📞 Contact

Hugues Macquet • M: +352621534146

✉ E-mail:

h.macquet@seastemia.com

## DESCRIPTION

---

The Kavalier is a 26.75m luxury yacht built by Sanlorenzo in 2010. It has a beam of 6.75m, a draft of 2.15m, and a gross tonnage of 132 tons. Powered by 1902 hp CAT engines, it can reach a top speed of 28 knots and cruise at 23 knots. The yacht accommodates up to 9 guests in 4 cabins.

## SPECIFICATIONS

## BOAT DETAILS

<b>Main Category</b>	Classic yacht	<b>Boat Status</b>	Brokerage
<b>Built Year</b>	2010	<b>Model Year</b>	2010
<b>Tax Status</b>	VAT Paid		

## BUILDER / DESIGNER

<b>Builder</b>	San Lorenzo
----------------	-------------

## DIMENSIONS

<b>Length</b>	26.75 M / 87'76"	<b>Beam</b>	6.75 M / 22'14"
<b>Draft</b>	2.15 M / 7'4"		

## MACHINERY

<b>Engine Maker</b>	Caterpillar	<b>Number of Engines</b>	2
<b>Propulsion Mode</b>	Diesel	<b>Engine(s) type</b>	Inboard



Address:

3 Rue de la Loge L-1945 Luxembourg



Contact

Hugues Macquet • M: +352621534146



E-mail:

h.macquet@seastemia.com

## MACHINERY

**Engine(s) power** 3,804.00 hp**Engine 1 hours** 1,400.00 H.**Main Generator Maker** Kholer

## PERFORMANCES

**Cruising Speed** 24.00 knots**Max Speed** 28.00 knots

## ACCOMODATIONS

**Sleeps** 8 guests**Berths** 2 simple, 2 double**Bathroom** 4**Crew** 4**Crew Cabin** 2

Address:

3 Rue de la Loge L-1945 Luxembourg



Contact

Hugues Macquet • M: +352621534146



E-mail:

h.macquet@seastemia.com

## COMMUNICATION & NAVIGATION EQUIPMENT

---

- Inverter for audio video L10 A 6.
- Camera system TVCC 3 cameras (2 fixed in the cock pit aft and one rotating with zoom in the engine room). The signal goes through all the tv's screens.
- Antenna TV satellite.
- Mini M Nera sat telephone in the wheel house and line in the Owner cabin.
- Interphone B&O for each room.
- B&O TV system in the living room, Owner cabin and remote control for each room.
- Decoders (7) for every TV.
- Spare dome for extra antenna.
- Plate electrical plugs.
- Professional washing machine MIELE.
- Professional drier machine MIELE.
- Cooking induction plate 75cm.
- Garbage compactor.
- Ice maker NEL in the lobby near the galley.
- SUBZERO wine refrigerator and refrigerator with stainless steel door.
- Hoven 90cm MIELE.
- Ice maker ICEMATIC fly bridge.
- Coffe machine with coffe grinder incorporated MIELE.
- Teppanyaki MIELE CT 400 on the fly bridge.
- SSB.
- GPS additional antenna.
- Chain counter Polaris LOFRANS (fly bridge and wheel house).
- GSM system Tellular antenna.
- 2 Monitors Raymarine G 170 in the wheel house with black box.
- Tap fresh water between two winches forward.
- Lateral gangway.
- Battery charger for generators.

- Cable master glindenning.
- Stern thruster.
- Antithef infrared wireless stern,lateral and wheel house doors.
- Wind station and anchor alarm in the Captain's cabin.
- Third pilot station on port side aft.
- Air compressor with outlet in the fly bridge.
- Water maker 230 L/h.
- Extra outlet for fresh water in the fly bridge.
- Electrical socket in the fly bridge.
- Submarine lights below platform aft.
- Teak furniture on the fly bridge.
- Boat name in inox backlit letters.
- Electric Pilot chair BESENZONI mod. 216 President.
- Galley floor in wood.
- Kit steam in the Owner bathroom.
- Backlit and magnifier mirror in the Owner bathroom.
- Extra safe box in the wheel house.
- Mosquito net (21).
- Pulman bed in the guest cabin starboard side.
- Led lights with dimmer.
- Plate switches LUTRON.
- Fly bridge all in teak.
- Spare VHF antenna.
- Covers for cock pit aft winter and summer.
- Extra bollard (2) aft maneouvring station.
- Remote control for forward winches (4).
- Remote control for aft winches (2).
- External upholstery in Sumbrella.
- Aft door with automatic opening.
- Pianola YAMAHA.
- Hot water recycling pump.
- Extra salt water pump for air conditioning.
- Double pumps system for grey waters.

- Double pumps system for black waters.
- Water purifying KINETICO.
- UV filter for fresh water.
- B&O TV system in the Owner bathroom.
- Shower on the fly bridge.
- Shower cock pit aft.
- Sun bed forward extended to the lateral steps.
- Tender WILLIAMS 445 Luxor.
- Tables on the fly bridge and cock pit aft with electrical up and down system.
- Mini bar in the owner cabin.
- Hamman system.
- Fins stabilizer zero speed Twin Disk.
- Two generators one of 33KW and one of 27KW special installed for fins stabilizer.
- Hard top.
- Rosewood floor in the living room.
- Yellow onyx for sinks, floors for each bathroom crew excluded.



Address:

3 Rue de la Loge L-1945 Luxembourg



Contact

Hugues Macquet • M: +352621534146



E-mail:

h.macquet@seastemia.com









Address:

3 Rue de la Loge L-1945 Luxembourg



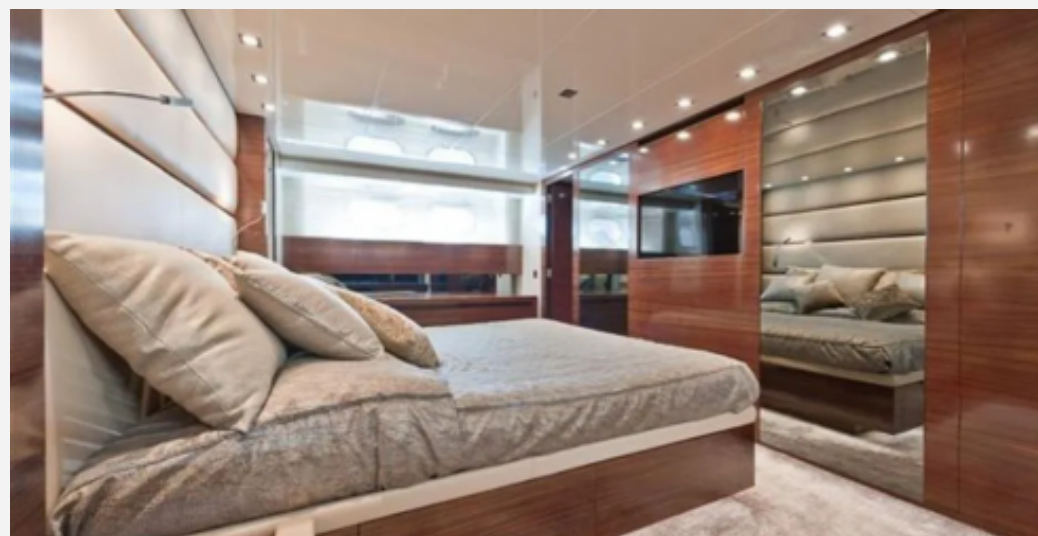
Contact

Hugues Macquet • M: +352621534146



E-mail:

[h.macquet@seastemia.com](mailto:h.macquet@seastemia.com)

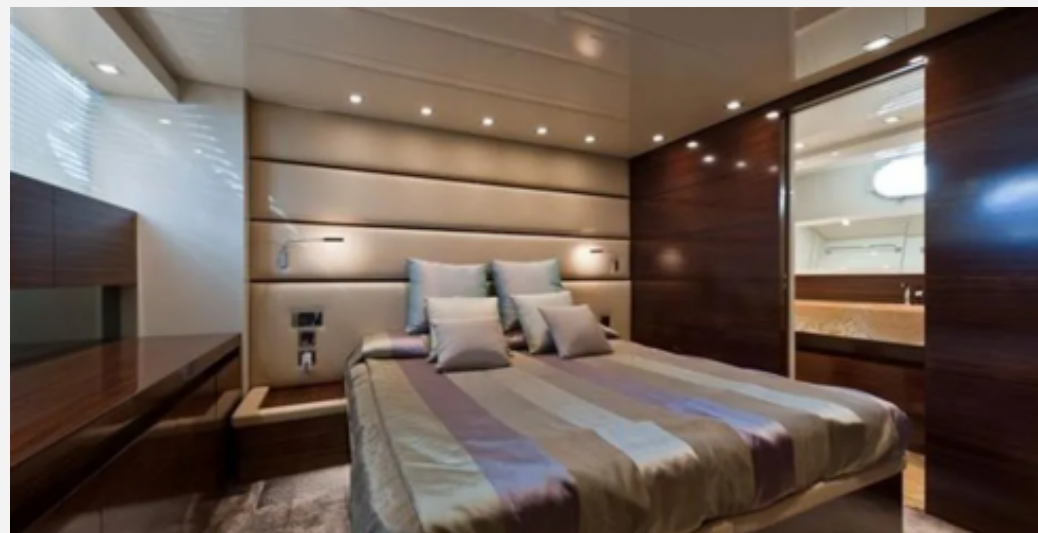
















Address:

3 Rue de la Loge L-1945 Luxembourg



Contact

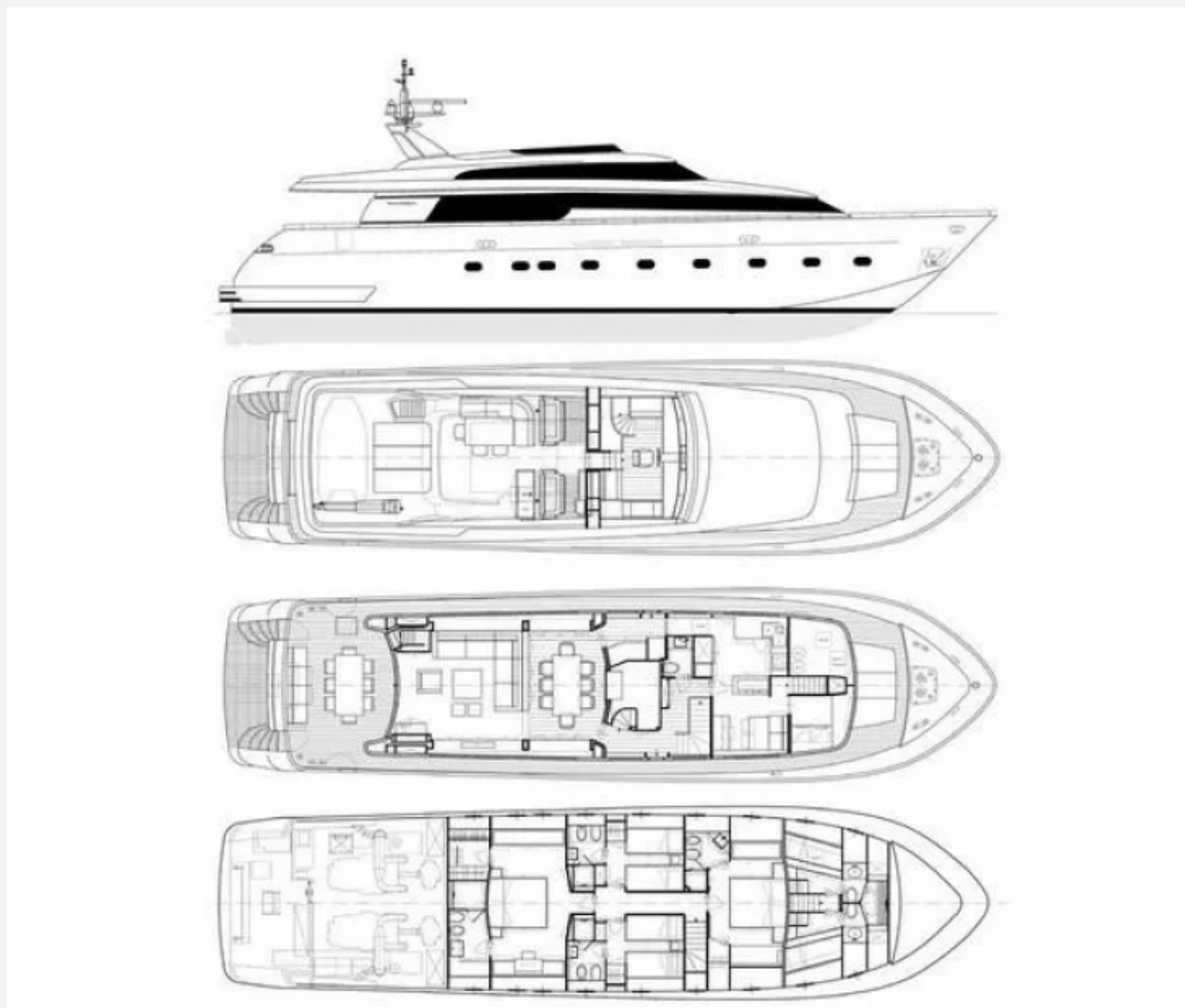
Hugues Macquet • M: +352621534146



E-mail:

[h.macquet@seastemia.com](mailto:h.macquet@seastemia.com)





Address:

3 Rue de la Loge L-1945 Luxembourg



Contact

Hugues Macquet • M: +352621534146



E-mail:

[h.macquet@seastemia.com](mailto:h.macquet@seastemia.com)