

23.99 M / 78'70"



CARACTÉRISTIQUES PRINCIPALES

Builder**Designer**

Sheerline, Niels van Oostenbrugge

Built Year

2016

Length

23.99 M / 78'70"

Beam

6.71 M / 22'1"

Draft

1.83 M / 6'0"

Displacement


104.30 tonnes

Registry

Pays-Bas

3,800,000 EUR 4,388,601 USD*


* Conversion approximative

 Adresse:

3 Rue de la Loge L-1945 Luxembourg

 Contact

Thomas Peltier • P: +352.27.40.99.90 • M: +352.621.326.323

 E-mail:

t.peltier@seastemia.com

SPÉCIFICATIONS

DÉTAILS DU BATEAU

Built Year	2016	Registry	Pays-Bas
-------------------	------	-----------------	----------

BUILDER / DESIGNER

Builder		Designer	Sheerline, Niels van Oostenbrugge
Naval Architect	Kroes & Poortinga	Hull Type	Displacement

DIMENSIONS

Length	23.99 M / 78'70"	Beam	6.71 M / 22'1"
Draft	1.83 M / 6'0"	Displacement	104.30 tonnes

MACHINERY

Engine Maker	MAN	Drive	Shaft
Number of Engines	1	Propulsion Mode	Diesel
Engine(s) type	Inboard	Engine(s) power	345.00 hp

MACHINERY

Engine(s) model	Man Diesel D2866LXE40	Heures moteur 1	650.00 H.
Main Generator Maker	Kohler	Main Generator Power	20.00 KW
Main Generator Hours	794.00 H.	Stabilizer Type	Hydraulic Thins
Stabilizer Maker	Hydrosta	Water Maker	Cathelco
Water Maker Flow	250.00 l/H / 66.00 gal/H	AC type	Marix type CIV8 + 1 FC6 + 2 FC4 + 3 FC2

PERFORMANCES

Cruising Speed	10.00 noeuds	Max Speed	11.00 noeuds
Range	3,000.00 NM		

TANKAGES

Water	5,000.00 litres / 1,320.00 US gals	Water Maker	260.00 litres / 68.64 US gals
--------------	------------------------------------	--------------------	-------------------------------

ACCOMODATIONS

Sleeps	9 guests	Courette	4 simple, 2 double
Bathroom	3	Crew	2

ACCOMODATIONS

1

23.99 M / 78'70"



23.99 M / 78'70"



23.99 M / 78'70"



23.99 M / 78'70"



23.99 M / 78'70"



23.99 M / 78'70"



23.99 M / 78'70"



23.99 M / 78'70"



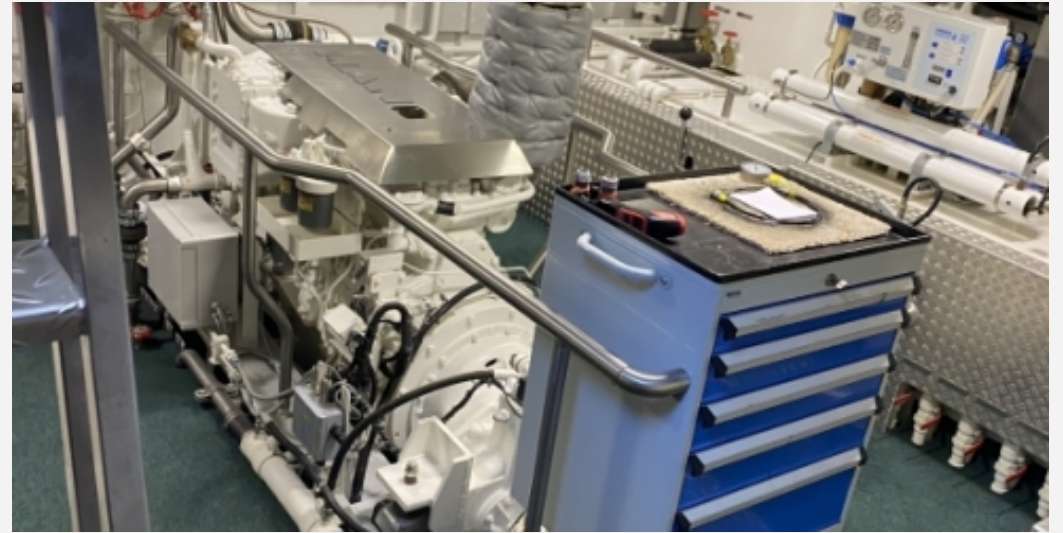
23.99 M / 78'70"



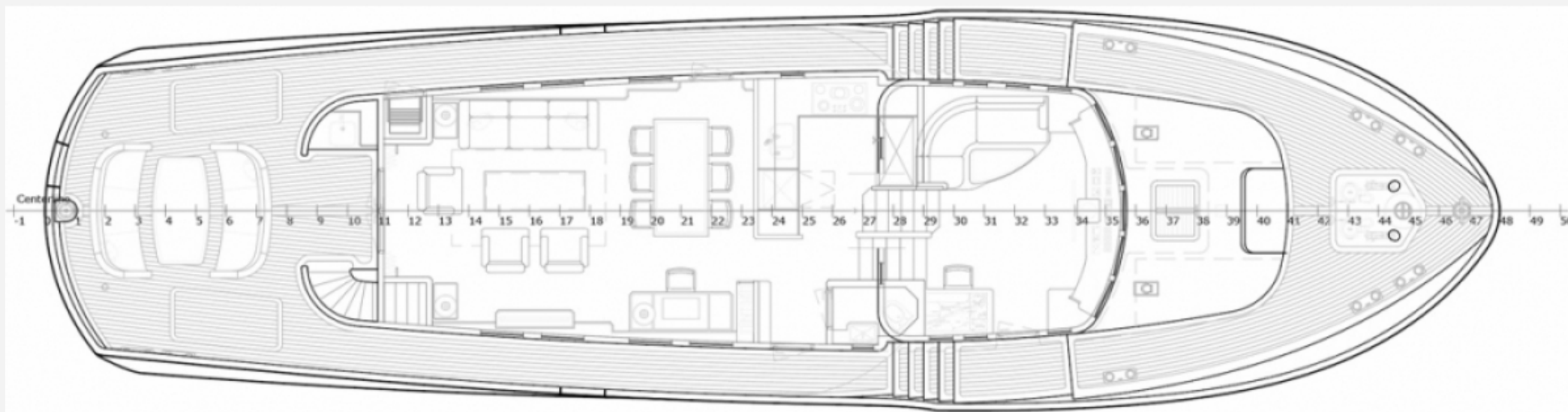
23.99 M / 78'70"



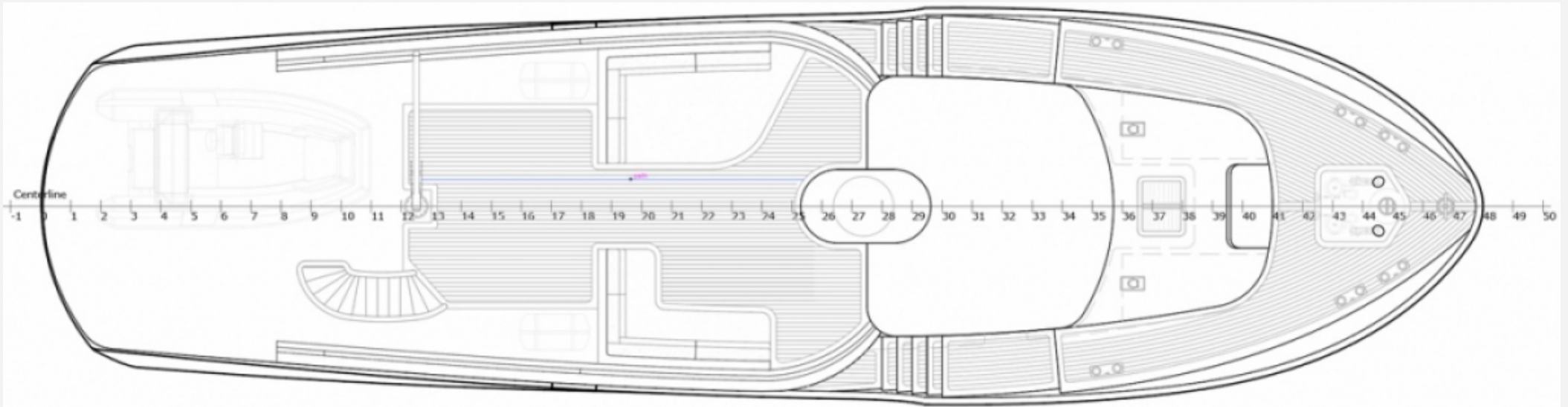
23.99 M / 78'70"



23.99 M / 78'70"



23.99 M / 78'70"



23.99 M / 78'70"

