



MAIN CHARACTERISTICS

Built Year	2000
Refit Year	2018
Length	26.10 M / 85'62"
Beam	6.35 M / 20'82"
Draft	1.62 M / 5'32"
Displacement	65.00 tons
Lying	south of france
Registry	France

850,000 EUR 981,661 USD*

* Approximate price conversion

 Address:

3 Rue de la Loge L-1945 Luxembourg

 Contact

Thomas Peltier • P: +352.27.40.99.90 • M: +352.621.326.323

 E-mail:

t.peltier@seastemia.com

DESCRIPTION

This very known functional and successful model in its time Falcon 86, very generous in volume and functional flybrige, took benefit by its present owner benefit of a full mechanical refit with notable engine overhauling on her two caterpillar with only 200 hours since 2018, change of transmission coupling, water tight sealing shaft replacemetn, heat exchanger cooling circuit full service, new exhaust insulation, both generator full service, new chains, new windlass and new navionics and more... She is now back in order and as reliable and enjoyable as a 90 footer range pleasure yacht should be. VAT paid unit, in a good maintenance and easthetic condition, her generous cherry varnished interior will serve her new owner with efficiency and style for many more years from now, and excellent affordable deal for a yacht which has still a lot to offer.

SPECIFICATIONS

BOAT DETAILS

Main Category	Motor yacht	Boat Status	Brokerage
Built Year	2000	Refit Year	2018
Lying	south of france	Registry	France

DIMENSIONS

Length	26.10 M / 85'62"	Beam	6.35 M / 20'82"
Draft	1.62 M / 5'32"	Displacement	65.00 tons

MACHINERY

Engine(s) power	1,400.00 hp	Engine(s) model	2X CATERPILLAR 3142E TA
Engine 1 hours	2,900.00 H.	Engine 2 hours	2,900.00 H.
Gearboxes/Transmission	ZF	Main Generator Maker	ONAN
Main Generator Power	22.00 KW	Auxiliary Generator Maker	ONAN

MACHINERY

Auxiliary Generator Power	22.00 KW	Water Maker	TECNICOMAR
Water Maker Flow	180.00 l/H / 47.52 gal/H	AC type	Mediterranean (upgraded from analogic to digital controls)

PERFORMANCES

Cruising Speed	18.00 knots	Max Speed	23.00 knots
Range	270.00 NM	Cruising Speed for Range	18.00 knots

TANKAGES

Fuel	8,500.00 liters / 2,244.00 US gals	Water	1,500.00 liters / 396.00 US gals
Grey Water	350.00 liters / 92.40 US gals	Black Water	300.00 liters / 79.20 US gals

ACCOMODATIONS

Sleeps	9 guests	Berths	5 simple, 2 double
Bathroom	4	Crew	4
Crew Cabin	4		

LAYOUT / INTERIOR

CCOMMODATION

LOWER DECK

Interior in creme colour.

Air-conditioning system throughout the boat, with reverse cycle system (changed in 2009 service up to date)

All shower pumps are from 2008

CREW CABINS (fore)

2x overlaid double single berth cabins.

2X en-suite head for each cabin

VIP CABIN with:

* Large double berth, wardrobes, dressing table, storage room

> en-suite head with washbasin, toilet, bidet, shower

* Sony TV

* Sony DVD multi-zone DVP-S325

* SONY CD, Tape, Tuner CMT-CPI

MASTER CABIN with:

- * Large double berth, large wardrobe, dressing table
- * large en-suite head with twin washbasin (his and hers), toilet, bidet, shower
- * LG Flatron flatscreen TV
- * Sony CMT-CPI CD, Tape Tuner
- * Thompson multi-zone DVD

TWIN GUEST CABINS with:

- * Twin berth, wardrobe (one of the cabin has a Pullman berth)
- * en-suite head with washbasin, toilet, shower
- * Sony CD, Tape, Tuner

MAIN DECK

- >*Wheel house on foredeck, with U-shaped settee on portside
- * Head

L shaped GALLEY with :

- * Miele oven

- * Electrolux cooking plate (2008)
- * Bosch Dishwasher
- * 2 x Liebherr Fridge / Freezer 220V/24V (2008)
- * Samsung Microwave
- * Raritan - Ice maker with separate water tank
- * Zanussi washing machine (2007)
- * Miele Tumble dryer

DINING ROOM with large table for up to 8 guests

SALOON

- * Half circle sofa + bar
 - * BOSE AV48 mediacenter with surround sound system (2008)
 - * Panasonic Viera 80cm flatscreen
 - * Sony Xbox Playstation II
 - * Pioneer PD-F958 100 disc CD Player (2003)
- >> Access to the aft cockpit

SUN DECK

- * Fly Helm pilot station with 360° view

- * Sunbathing
- * C-shaped settee + table
- * Ice maker and fridge
- * Location for the dinghy on aft
- * Direct access from the main deck or pilothouse



COMMUNICATION & NAVIGATION EQUIPMENT

MACHINERY AND NAVIGATION

2 x LOFRANS electric windlass (2017)

2 x new anchors and new 100m galvanized steel chain (2017)

2 x aft electric winches

Cooling circuit heat exchanger service full service 2017

Exhaust insulation change in 2017

NAVIGATION

4x GARMIN GS MAP 8015 Plotter/radar (Helm + Fly)

2x GARMIN GHC200MFC autopilot (Helm + Fly) + remote control

2x GARMIN 300i AIS VHF (Helm + Fly)

2x GARMIN handle VHF

2x RAYMARINE navigation center (Helm + Fly)

1x Sat phonee/fax

BATTERY

Shore power 220V

12 x service batteries (2016) + 2 x engine batteries (2018) + 2 x 165Amp 12V (generator)+ 155Amp 24V

3 x VICTRON battery chargers (2018)



RECREATIONAL EQUIPMENT

EQUIPMENT

Gangway / Bimini on Flybridge

Windscreen covers

Fly instruments cover

Sun cushions + covers

Bathing ladder in s/s

with a Flybridge crane (engine 2019) to serve :

TENDER WALKER BAY 430 (2010) with outboard YAmaha engine 60HP (2010)

YAMAHA WAVE RUNNER 1300R jetski (new 20 engine hours)











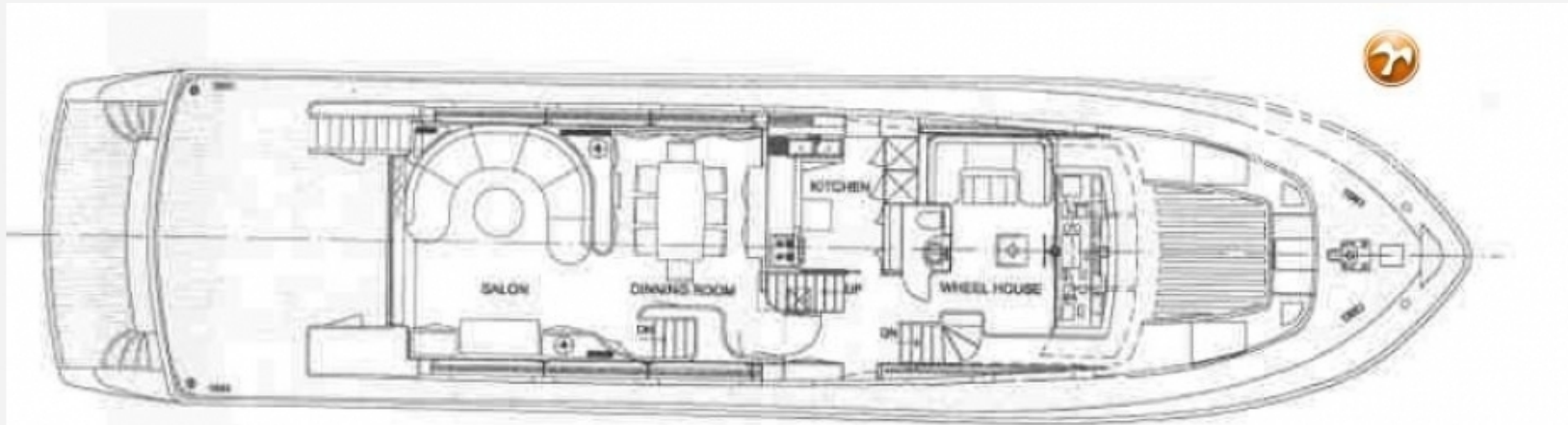




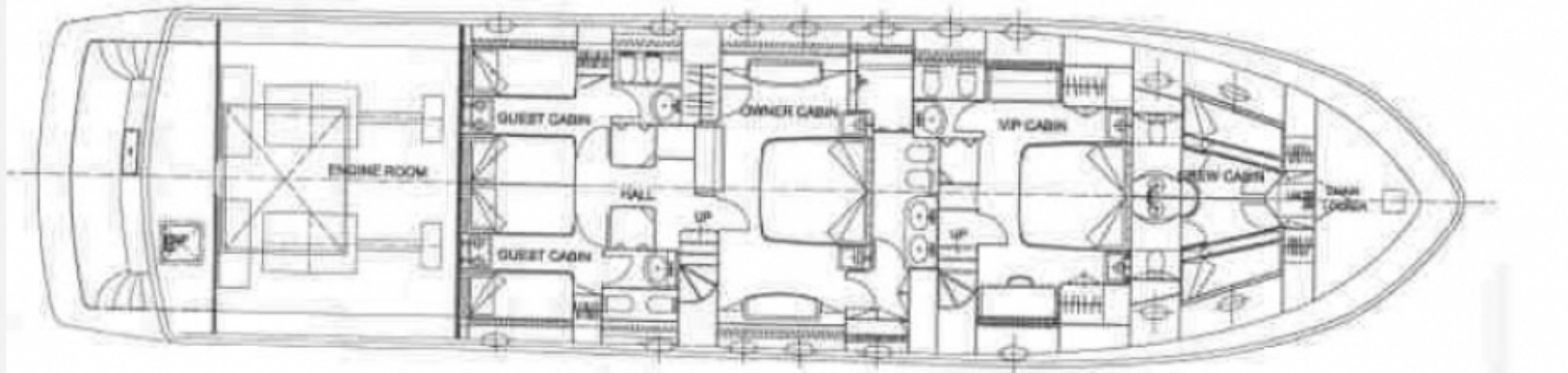








FALCON 86' MAIN DECK SCALE 1:100



FALCON 86' LOWER DECK SCALE 1:100

