

23.67 M / 77'65"



CARACTÉRISTIQUES PRINCIPALES

Built Year	2008
Refit Year	2017
Length	23.67 M / 77'65"
Beam	6.56 M / 21'51"
Draft	1.80 M / 5'91"
Displacement	105.00 tonnes
Registry	Pologne

1,495,000 EUR 1,543,927 USD*

* Conversion approximative

🏠 Adresse:

3 Rue de la Loge L-1945 Luxembourg

📞 Contact

Thomas Peltier • P: +352.27.40.99.90 • M: +352.621.326.323

✉ E-mail:

t.peltier@seastemia.com

23.67 M / 77'65"

SPÉCIFICATIONS

DÉTAILS DU BATEAU

Main Category	Motor yacht	Boat Status	Brokerage
Built Year	2008	Model Year	2009
Refit Year	2017	Registry	Pologne

BUILDER / DESIGNER

Model	BANDIDO 75	Hull Type	Displacement
--------------	------------	------------------	--------------

DIMENSIONS

Length	23.67 M / 77'65"	Beam	6.56 M / 21'51"
Draft	1.80 M / 5'91"	Displacement	105.00 tonnes

MACHINERY

Engine Maker	MAN	Number of Engines	2
Propulsion Mode	Diesel	Engine(s) power	560.00 hp

MACHINERY

Engine(s) model	D2876LE402	Heures moteur 1	1,740.00 H.
Heures moteur 2	1,740.00 H.	Main Generator Maker	ONAN
Main Generator Power	22.00 KW	Main Generator Hours	2,630.00 H.
Auxiliary Generator Maker	ONAN	Auxiliary Generator Power	22.00 KW
Auxiliary Generator Hours	2,850.00 H.	Stabilizer Type	Hydraulic Thins
Stabilizer Maker	WESMAR	Water Maker	Sea Recovery
Water Maker Flow	110.00 l/H / 29.04 gal/H		

PERFORMANCES

Cruising Speed	10.00 noeuds	Max Speed	12.00 noeuds
Range	2,500.00 NM	Cruising Speed for Range	10.00 noeuds

TANKAGES

Fuel	18,000.00 litres / 4,752.00 US gals	Water	3,000.00 litres / 792.00 US gals
Water Maker	757.00 litres / 199.85 US gals	Holding	450.00 litres / 118.80 US gals

23.67 M / 77'65"

ACCOMODATIONS

Sleeps	8 guests	Courette	2 simple, 3 double
Bathroom	4	Crew	2
Crew Berths	2		

23.67 M / 77'65"



23.67 M / 77'65"



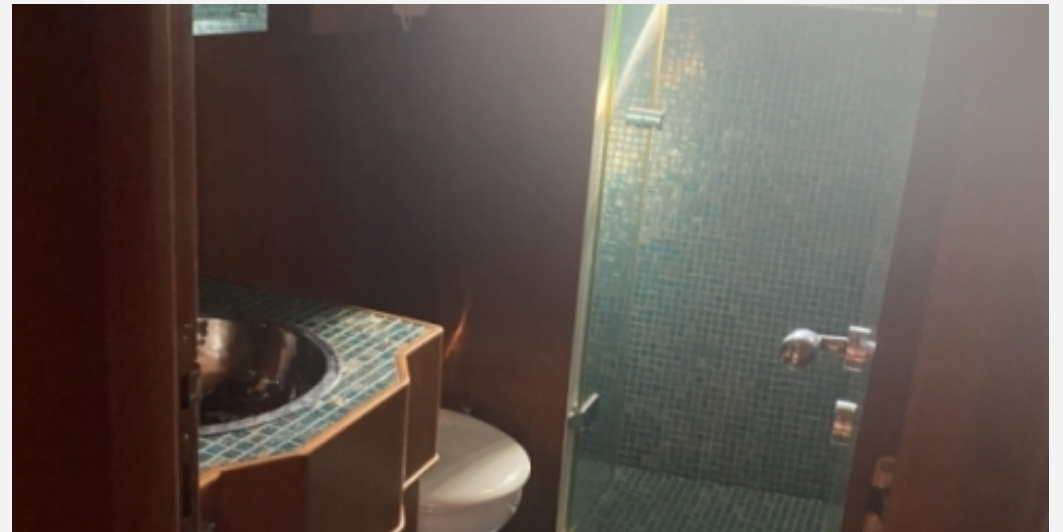
23.67 M / 77'65"



23.67 M / 77'65"



23.67 M / 77'65"



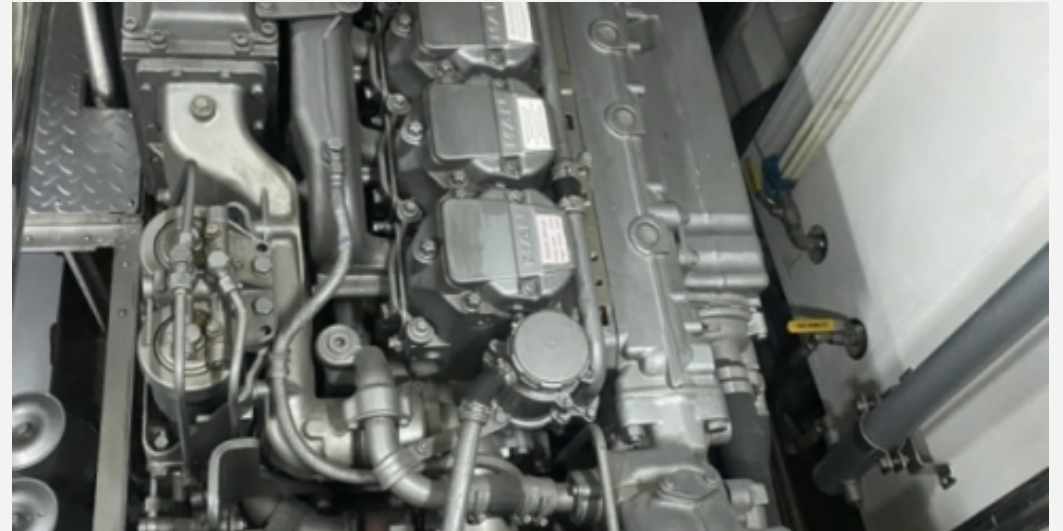
23.67 M / 77'65"



23.67 M / 77'65"



23.67 M / 77'65"



23.67 M / 77'65"

