

13.82 M / 45'34"



CARACTÉRISTIQUES PRINCIPALES

Builder**Designer**

Too Design - Marco Casali

Built Year

2021

Length

13.82 M / 45'34"

Beam

3.95 M / 12'96"

Draft

1.33 M / 4'36"

650,000 EUR 750,489 USD*

* Conversion approximative

🏠 Adresse:

3 Rue de la Loge L-1945 Luxembourg

📞 Contact

Thomas Peltier • P: +352.27.40.99.90 • M: +352.621.326.323

✉ E-mail:

t.peltier@seastemia.com

13.82 M / 45'34"

SPÉCIFICATIONS

DÉTAILS DU BATEAU

Main Category	Motor yacht	Boat Status	Brokerage
Built Year	2021		

CERTIFICATION

Category	A	Compliance	Rina
-----------------	---	-------------------	------

BUILDER / DESIGNER

Builder		Designer	Too Design - Marco Casali
Naval Architect	Ferretti Group	Model	Itama 45S
Hull Type	Planning Hull		

DIMENSIONS

Length	13.82 M / 45'34"	Beam	3.95 M / 12'96"
Draft	1.33 M / 4'36"		

13.82 M / 45'34"

MACHINERY

Engine Maker	Cummins	Drive	Shaft
Number of Engines	2	Propulsion Mode	Diesel
Engine(s) type	Inboard	Engine(s) power	550.00 hp
Engine(s) model	QSB 6.7	Heures moteur 1	255.00 H.
Heures moteur 2	255.00 H.	Main Generator Maker	onan
Main Generator Power	9.00 KW	Main Generator Hours	480.00 H.

PERFORMANCES

Cruising Speed	30.00 noeuds	Max Speed	34.00 noeuds
Range	280.00 NM	Cruising Speed for Range	26.00 noeuds

TANKAGES

Fuel	1,130.00 litres / 298.32 US gals	Water	330.00 litres / 87.12 US gals
Holding	42.00 litres / 11.09 US gals		

ACCOMODATIONS

Sleeps	4 guests	Courette	2 simple, 1 double
---------------	----------	-----------------	--------------------

13.82 M / 45'34"

ACCOMODATIONS

Bathroom

1

13.82 M / 45'34"



13.82 M / 45'34"



13.82 M / 45'34"



13.82 M / 45'34"



13.82 M / 45'34"



13.82 M / 45'34"



13.82 M / 45'34"



13.82 M / 45'34"



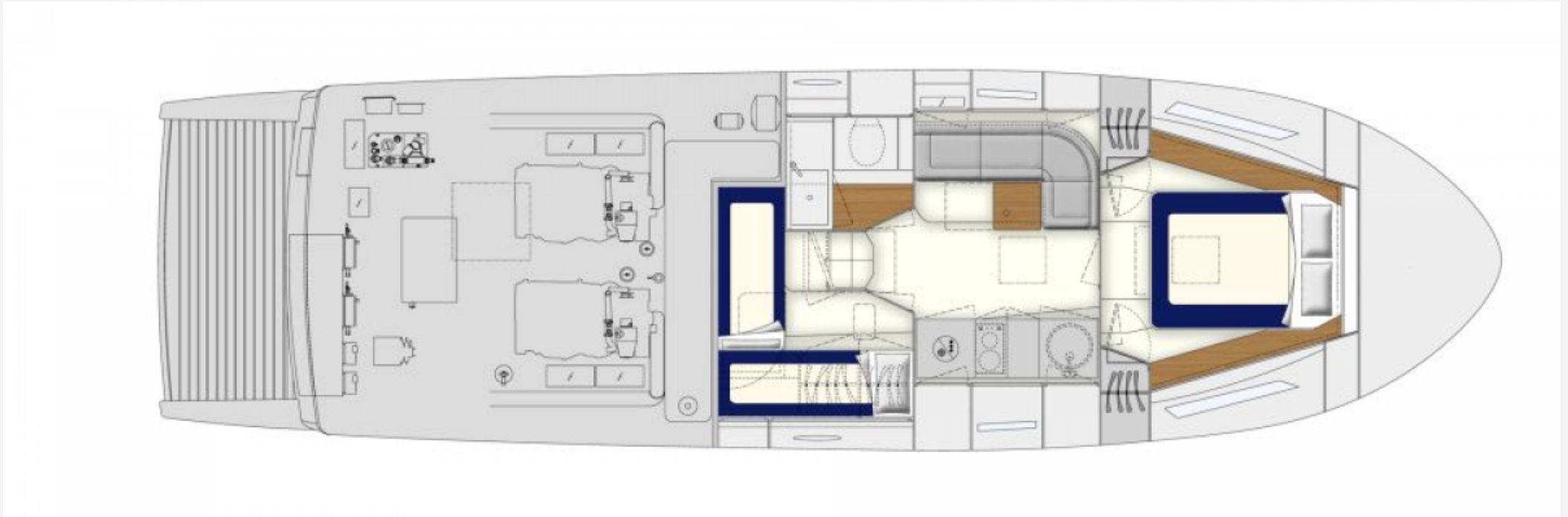
13.82 M / 45'34"



13.82 M / 45'34"



13.82 M / 45'34"



13.82 M / 45'34"

