

24.30 M / 79'73"



## CARACTÉRISTIQUES PRINCIPALES

<b>Builder</b>	Fairline
<b>Built Year</b>	2014
<b>Refit Year</b>	2023
<b>Length</b>	24.30 M / 79'73"
<b>Beam</b>	5.60 M / 18'37"
<b>Draft</b>	1.90 M / 6'23"
<b>Displacement</b>	46.50 tonnes
<b>Registry</b>	Angleterre

**42,000 EUR** 43,375 USD\* **par semaine**

\* Conversion approximative

🏠 Adresse:

3 Rue de la Loge L-1945 Luxembourg

📞 Contact

Thomas Peltier • P: +352.27.40.99.90 • M: +352.621.326.323

✉ E-mail:

t.peltier@seastemia.com

24.30 M / 79'73"

## SPÉCIFICATIONS

## DÉTAILS DU BATEAU

<b>Boat Status</b>	Brokerage	<b>Built Year</b>	2014
<b>Refit Year</b>	2023	<b>Registry</b>	Angleterre

## CERTIFICATION

<b>Category</b>	B
-----------------	---

## BUILDER / DESIGNER

<b>Builder</b>	Fairline	<b>Model</b>	FAIRLINE SQUADRON 780
<b>Hull Type</b>	Planning Hull		

## DIMENSIONS

<b>Length</b>	24.30 M / 79'73"	<b>Beam</b>	5.60 M / 18'37"
<b>Draft</b>	1.90 M / 6'23"	<b>Displacement</b>	46.50 tonnes

## MACHINERY

<b>Engine Maker</b>	Caterpillar	<b>Drive</b>	Shaft
---------------------	-------------	--------------	-------

24.30 M / 79'73"

## MACHINERY

<b>Number of Engines</b>	2	<b>Propulsion Mode</b>	Diesel
<b>Engine(s) power</b>	1,622.00 hp	<b>Engine(s) model</b>	CAT C32
<b>Heures moteur 1</b>	1,420.00 H.	<b>Heures moteur 2</b>	1,420.00 H.
<b>Main Generator Maker</b>	KHOLER	<b>Main Generator Power</b>	22.00 KW
<b>Main Generator Hours</b>	1,240.00 H.	<b>Auxiliary Generator Maker</b>	KHOLER
<b>Auxiliary Generator Power</b>	22.00 KW	<b>Auxiliary Generator Hours</b>	1,260.00 H.
<b>Stabilizer Type</b>	Hydraulic Thins	<b>Stabilizer Maker</b>	SIDE POWER
<b>Water Maker</b>	SEAFARI	<b>Water Maker Flow</b>	200.00 l/H / 52.80 gal/H

## PERFORMANCES

<b>Cruising Speed</b>	21.00 noeuds	<b>Max Speed</b>	32.00 noeuds
<b>Range</b>	460.00 NM	<b>Cruising Speed for Range</b>	24.00 noeuds

## TANKAGES

<b>Fuel</b>	5,900.00 litres / 1,557.60 US gals	<b>Water</b>	1,600.00 litres / 422.40 US gals
-------------	------------------------------------	--------------	----------------------------------

24.30 M / 79'73"

## ACCOMODATIONS

<b>Sleeps</b>	8 guests	<b>Courette</b>	4 simple, 2 double
<b>Bathroom</b>	3	<b>Crew</b>	2
<b>Crew Berths</b>	2		

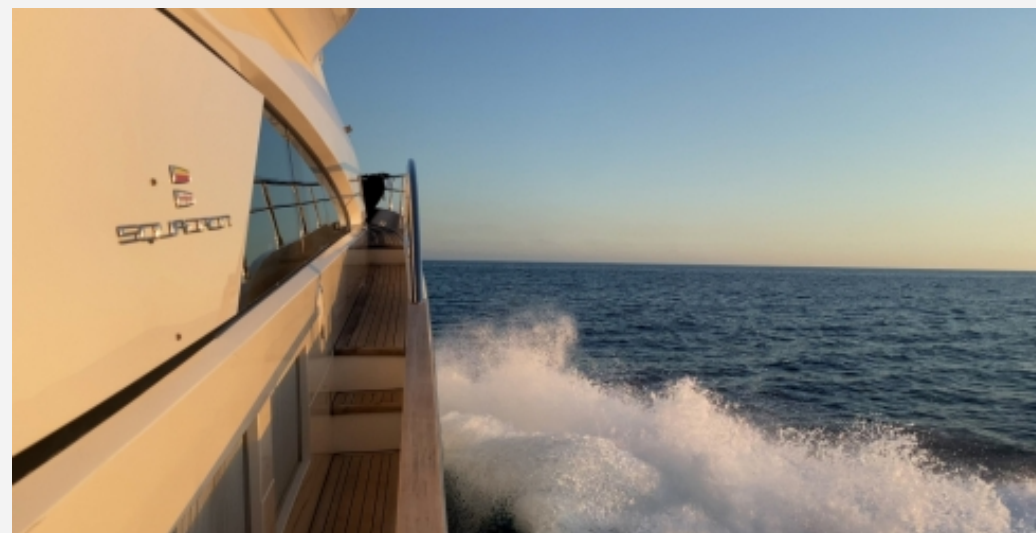


24.30 M / 79'73"





24.30 M / 79'73"





24.30 M / 79'73"





24.30 M / 79'73"





24.30 M / 79'73"





24.30 M / 79'73"





24.30 M / 79'73"





24.30 M / 79'73"

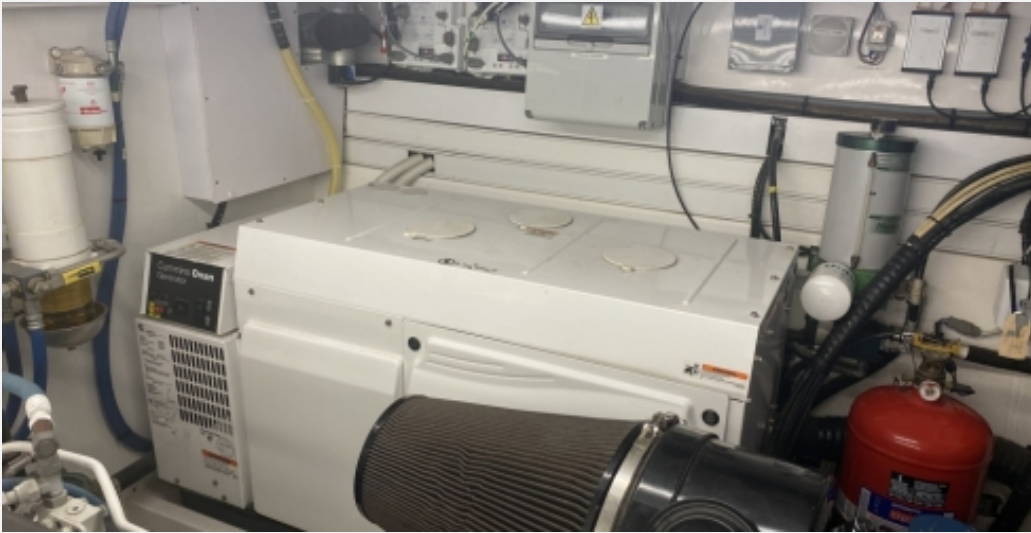


24.30 M / 79'73"





24.30 M / 79'73"





24.30 M / 79'73"

