

20.67 M / 67'81"



CARACTÉRISTIQUES PRINCIPALES

Length	20.67 M / 67'81"
Beam	5.29 M / 17'35"
Draft	1.80 M / 5'91"
Displacement	46.50 tonnes

POA

* Conversion approximative

🏠 Adresse:

3 Rue de la Loge L-1945 Luxembourg

📞 Contact

Thomas Peltier • P: +352.27.40.99.90 • M: +352.621.326.323

✉ E-mail:

t.peltier@seastemia.com

SPÉCIFICATIONS

CERTIFICATION

Certification	RINA	Category	A
Compliance	B+F+Aa (Sound emission)		

DIMENSIONS

Length	20.67 M / 67'81"	Beam	5.29 M / 17'35"
Draft	1.80 M / 5'91"	Displacement	46.50 tonnes

MACHINERY

Engine Maker	MAN	Propulsion Mode	Diesel
Engine(s) power	1,550.00 hp	Engine(s) model	MAN V12

PERFORMANCES

Cruising Speed	33.00 noeuds	Max Speed	37.00 noeuds
Range	250.00 NM		

20.67 M / 67'81"

TANKAGES

Fuel	3,800.00 litres / 1,003.20 US gals	Water	710.00 litres / 187.44 US gals
-------------	------------------------------------	--------------	--------------------------------

ACCOMODATIONS

Sleeps	6 guests	Courette	2 simple, 2 double
Bathroom	3	Crew	1
Crew Berths	1		

20.67 M / 67'81"



20.67 M / 67'81"



20.67 M / 67'81"



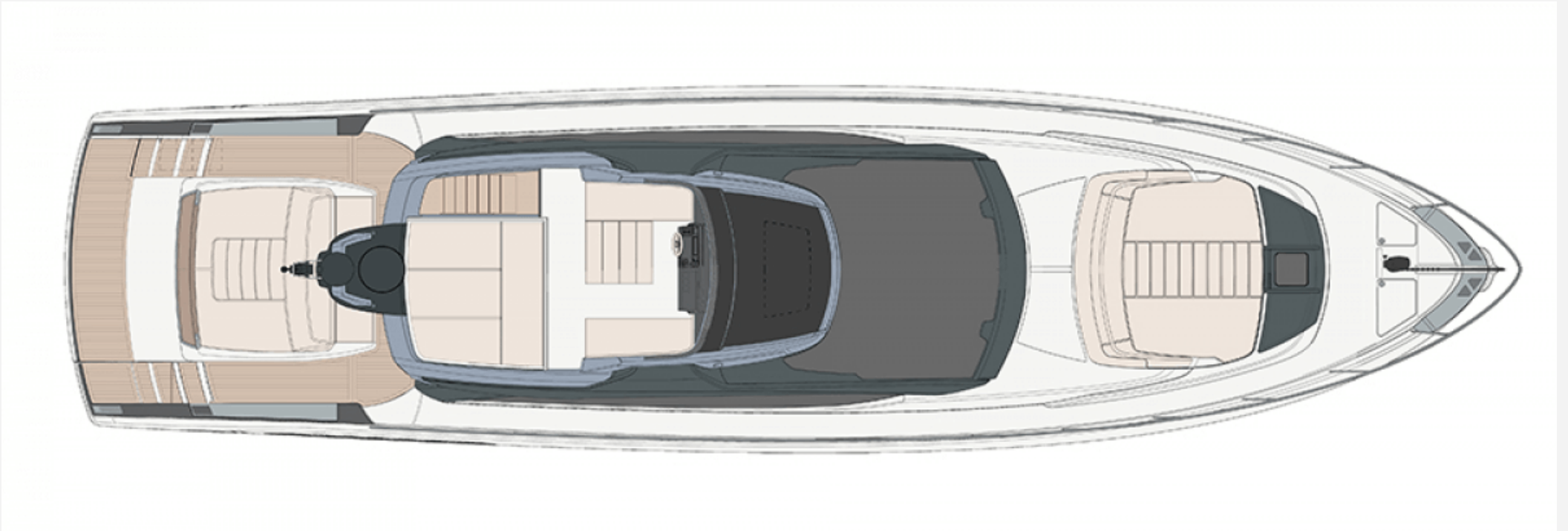
20.67 M / 67'81"



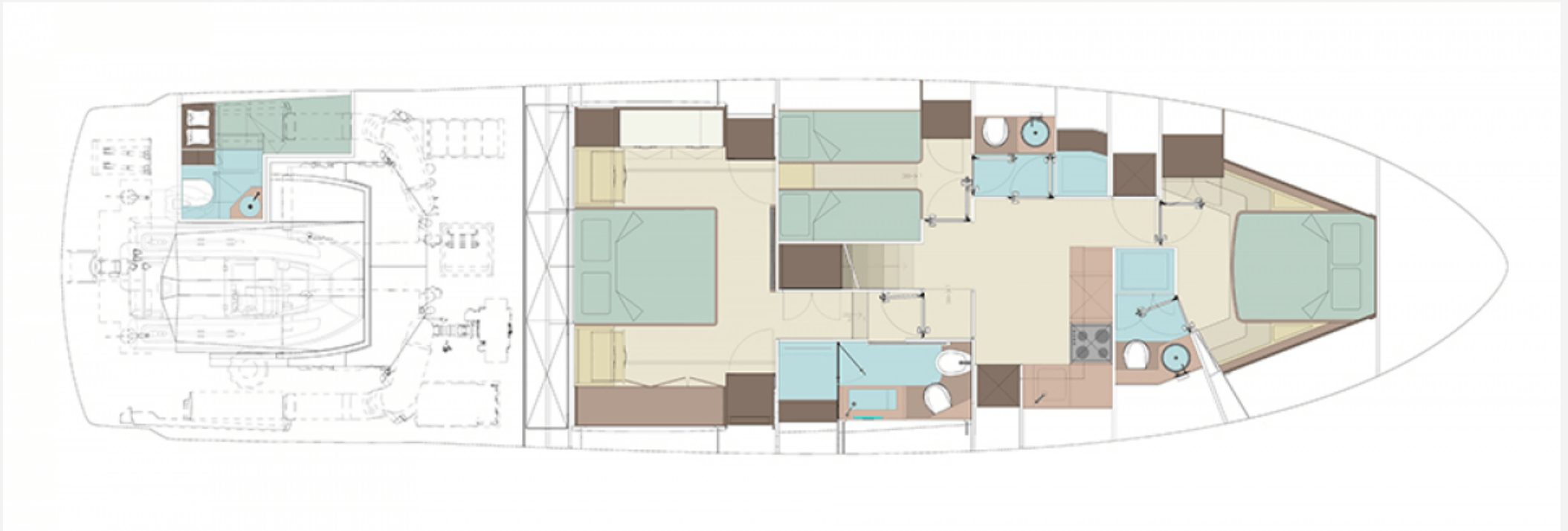
20.67 M / 67'81"



20.67 M / 67'81"



20.67 M / 67'81"



20.67 M / 67'81"

