

26.92 M / 88'31"



CARACTÉRISTIQUES PRINCIPALES

Length	26.92 M / 88'31"
Beam	6.31 M / 20'69"
Draft	1.97 M / 6'46"
Displacement	82.00 tonnes

POA

* Conversion approximative

🏠 Adresse:

3 Rue de la Loge L-1945 Luxembourg

📞 Contact

Thomas Peltier • P: +352.27.40.99.90 • M: +352.621.326.323

✉ E-mail:

t.peltier@seastemia.com

26.92 M / 88'31"

SPÉCIFICATIONS

CERTIFICATION

Certification	RINA	Category	A
Compliance	B + F + Aa (sound emission)		

DIMENSIONS

Length	26.92 M / 88'31"	Beam	6.31 M / 20'69"
Draft	1.97 M / 6'46"	Displacement	82.00 tonnes

MACHINERY

Engine Maker	MTU	Propulsion Mode	Diesel
Engine(s) power	2,638.00 hp	Engine(s) model	MTU 16V 2000 M96L
Gearboxes/Transmission	V-Drive		

PERFORMANCES

Cruising Speed	32.00 noeuds	Max Speed	38.00 noeuds
-----------------------	--------------	------------------	--------------

26.92 M / 88'31"

PERFORMANCES

Range 340.00 NM

TANKAGES

Fuel 8,000.00 litres / 2,112.00 US gals

Water 1,200.00 litres / 316.80 US gals

ACCOMODATIONS

Sleeps 8 guests

Courette 2 simple, 3 double

Bathroom 4

Crew 3

Crew Berths 3

26.92 M / 88'31"



26.92 M / 88'31"



26.92 M / 88'31"



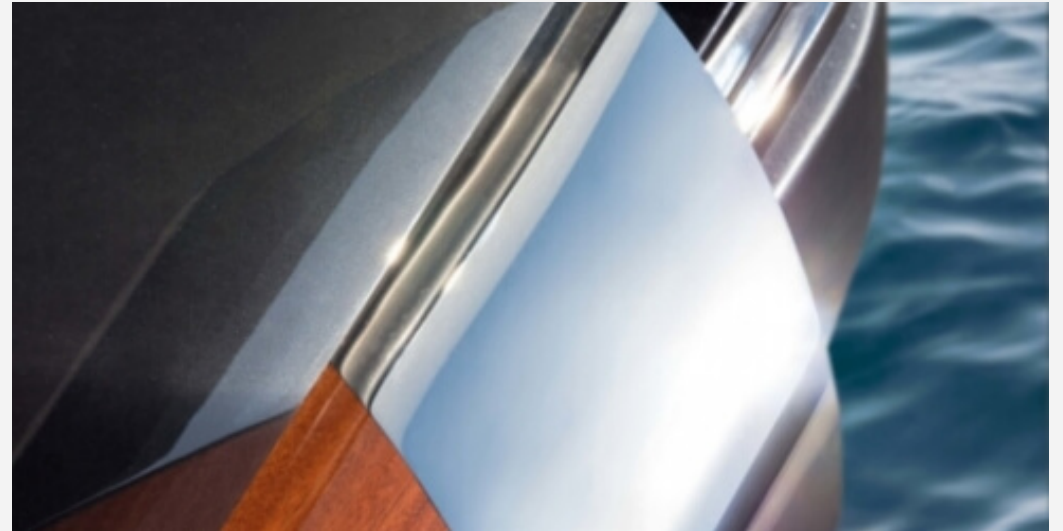
26.92 M / 88'31"



26.92 M / 88'31"



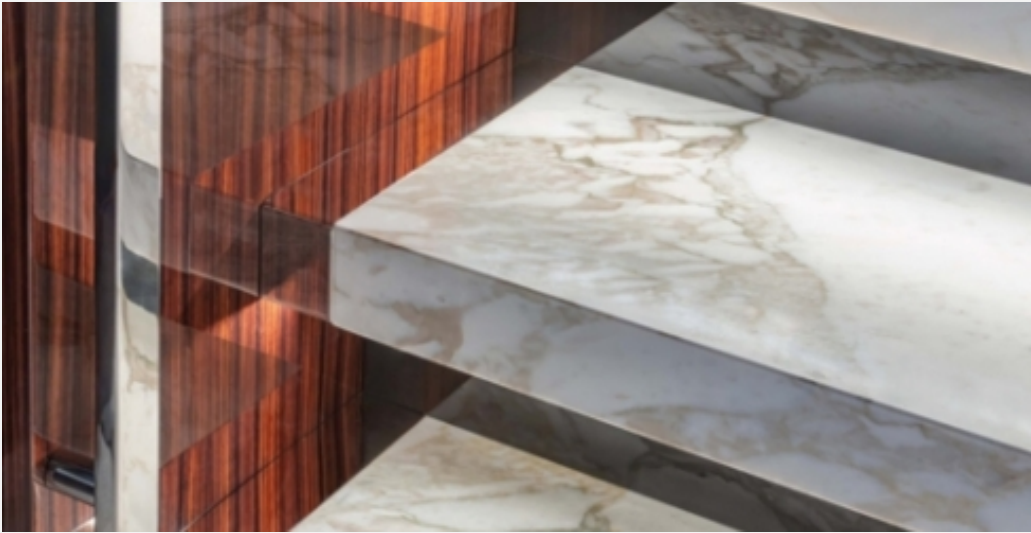
26.92 M / 88'31"



26.92 M / 88'31"



26.92 M / 88'31"



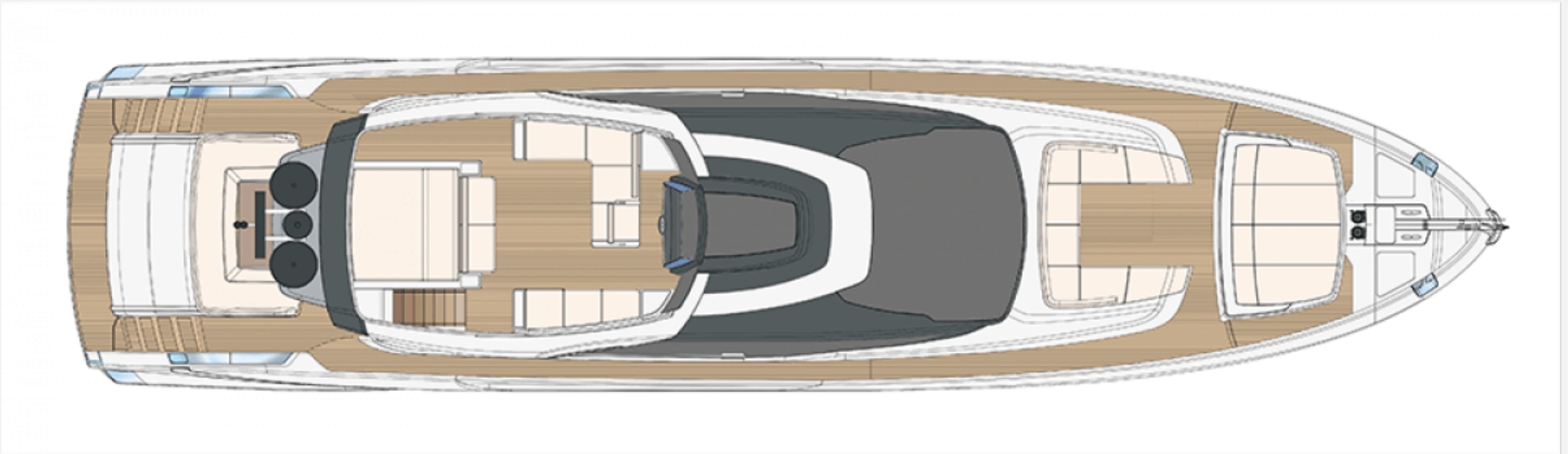
26.92 M / 88'31"



26.92 M / 88'31"



26.92 M / 88'31"



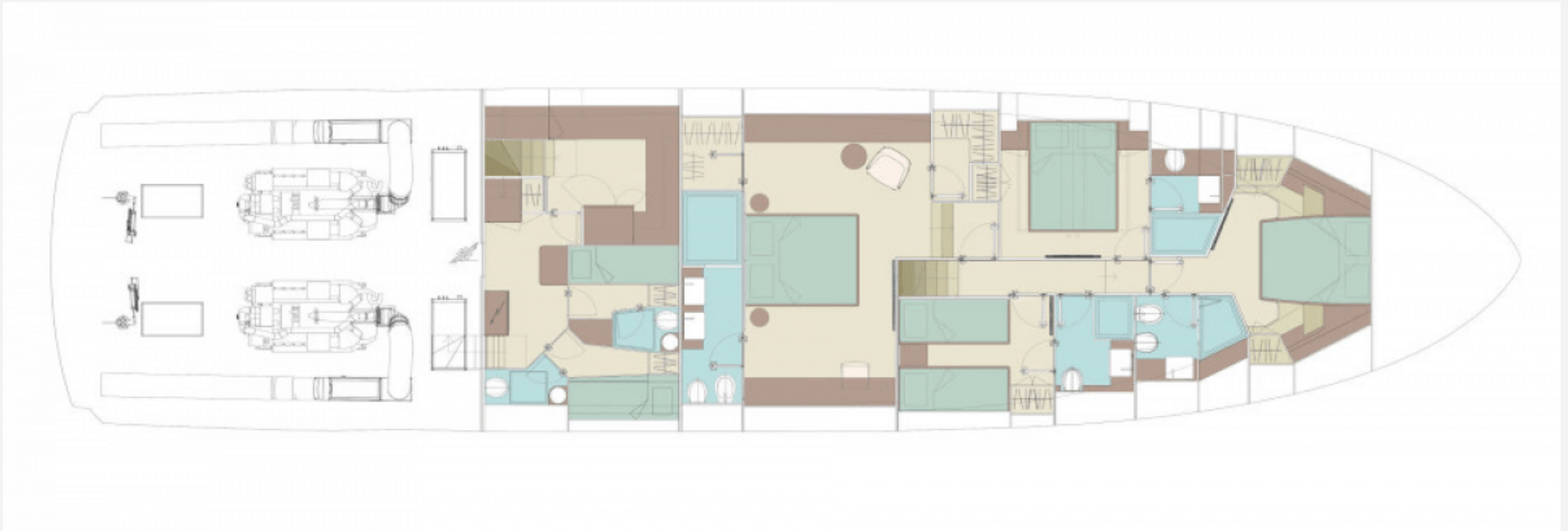
26.92 M / 88'31"



26.92 M / 88'31"



26.92 M / 88'31"



26.92 M / 88'31"



26.92 M / 88'31"



26.92 M / 88'31"

