

22.58 M / 74'7"



CARACTÉRISTIQUES PRINCIPALES

Builder**Length**

22.58 M / 74'7"

Beam

6.85 M / 22'46"

Draft

1.68 M / 5'50"

Displacement

59.50 tonnes

POA

* Conversion approximative

🏠 Adresse:

3 Rue de la Loge L-1945 Luxembourg

📞 Contact

Thomas Peltier • P: +352.27.40.99.90 • M: +352.621.326.323

✉ E-mail:

t.peltier@seastemia.com

22.58 M / 74'7"

SPÉCIFICATIONS

CERTIFICATION

Certification	RINA	Category	A
Compliance	B + F + Aa (Sound Emission)		

BUILDER / DESIGNER

Builder	
----------------	--

DIMENSIONS

Length	22.58 M / 74'7"	Beam	6.85 M / 22'46"
Draft	1.68 M / 5'50"	Displacement	59.50 tonnes

MACHINERY

Engine Maker	MTU	Drive	Shaft
Number of Engines	2	Propulsion Mode	Diesel
Engine(s) type	Inboard	Engine(s) power	1,623.00 hp

22.58 M / 74'7"

MACHINERY

Engine(s) model MTU 10V 2000 M94

PERFORMANCES

Cruising Speed 28.00 noeuds**Max Speed** 32.00 noeuds**Range** 300.00 NM**Cruising Speed for Range** 29.00 noeuds

TANKAGES

Fuel 5,650.00 litres / 1,491.60 US gals**Water** 990.00 litres / 261.36 US gals

ACCOMODATIONS

Sleeps 8 guests**Courette** 2 simple, 3 double**Bathroom** 3**Crew** 2**Crew Berths** 2

22.58 M / 74'7"



22.58 M / 74'7"



22.58 M / 74'7"



22.58 M / 74'7"



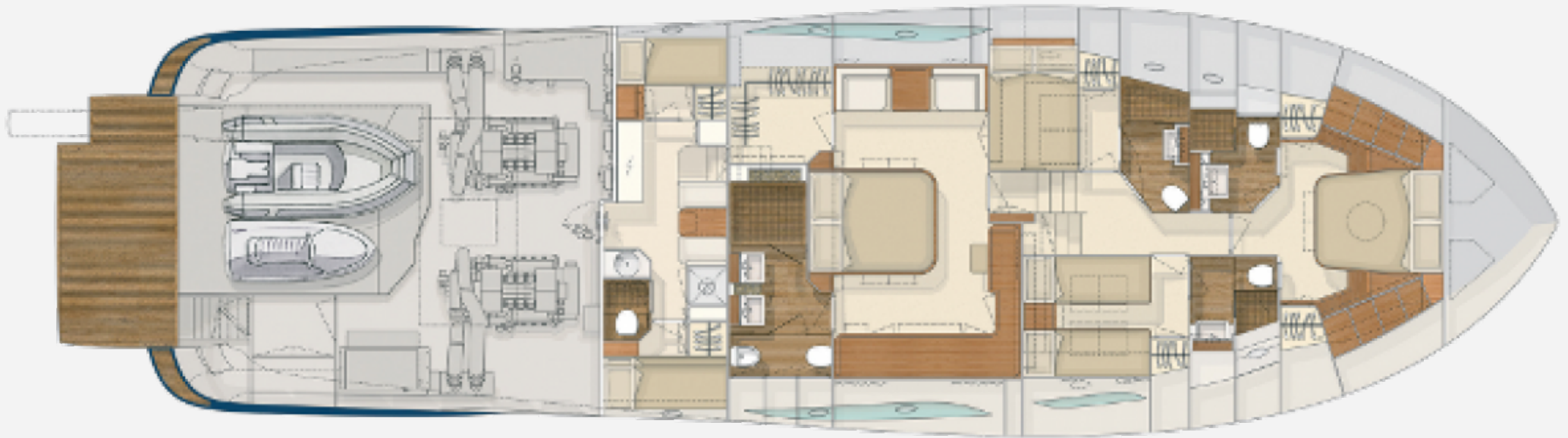
22.58 M / 74'7"



22.58 M / 74'7"



22.58 M / 74'7"



22.58 M / 74'7"



22.58 M / 74'7"

