

23.25 M / 76'28"



CARACTÉRISTIQUES PRINCIPALES

Builder	Riva
Length	23.25 M / 76'28"
Beam	5.75 M / 18'87"
Draft	1.90 M / 6'23"

POA

* Conversion approximative

🏠 Adresse:

3 Rue de la Loge L-1945 Luxembourg

📞 Contact

Thomas Peltier • P: +352.27.40.99.90 • M: +352.621.326.323

✉ E-mail:

t.peltier@seastemia.com

23.25 M / 76'28"

SPÉCIFICATIONS

CERTIFICATION

Category	A
----------	---

BUILDER / DESIGNER

Builder	Riva	Naval Architect	Riva Yachts
---------	------	-----------------	-------------

DIMENSIONS

Length	23.25 M / 76'28"	Beam	5.75 M / 18'87"
Draft	1.90 M / 6'23"		

MACHINERY

Engine Maker	MAN	Drive	Shaft
Number of Engines	2	Propulsion Mode	Diesel
Engine(s) type	Inboard	Engine(s) power	1,800.00 hp
Engine(s) model	MAN V12 - 1.800 HP		

23.25 M / 76'28"

ACCOMODATIONS

Sleeps

8 guests

Crew

1

23.25 M / 76'28"



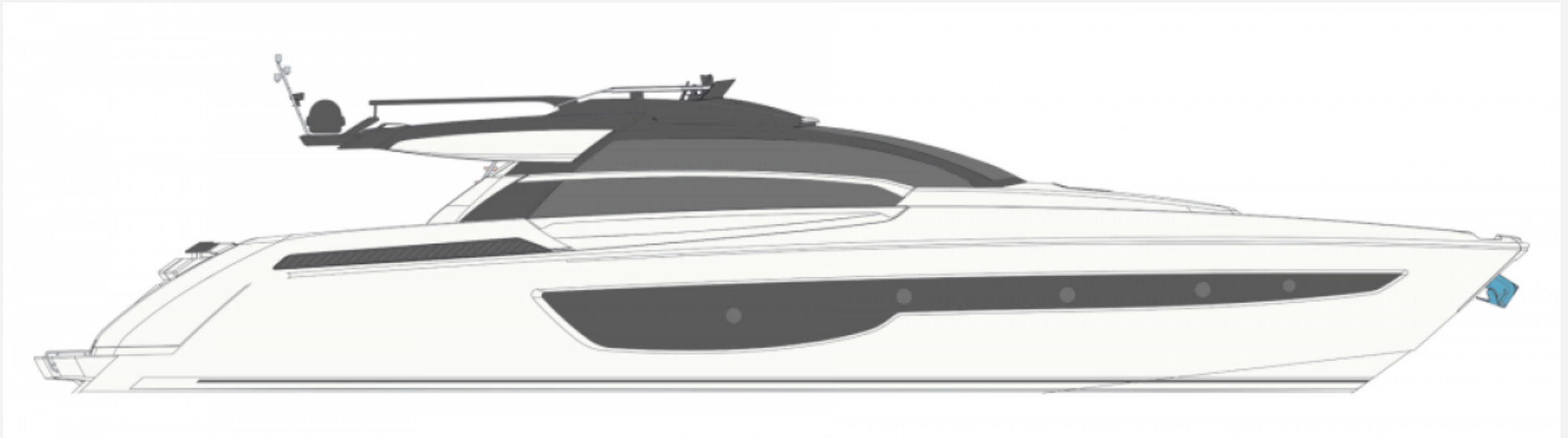
23.25 M / 76'28"



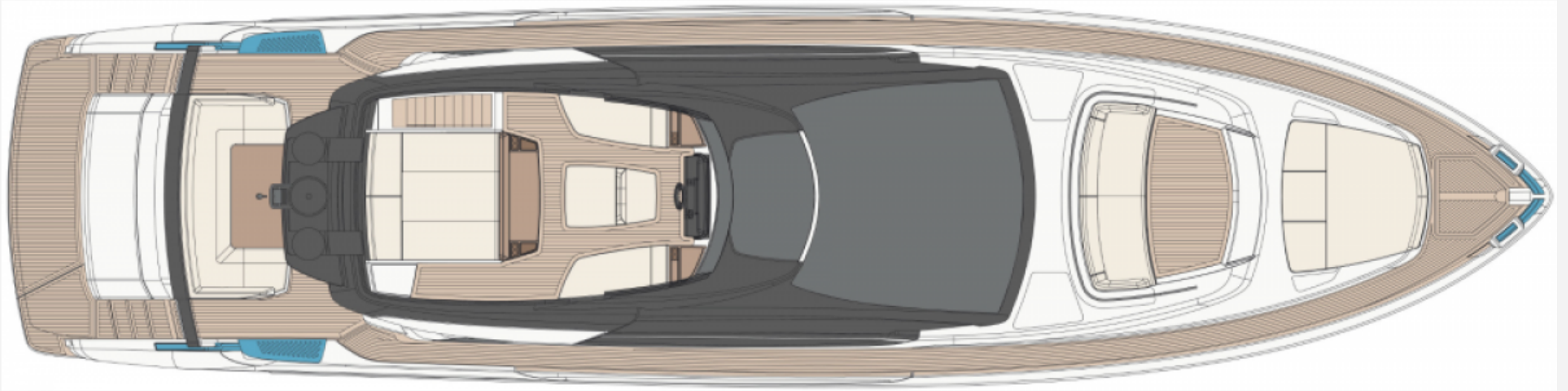
23.25 M / 76'28"



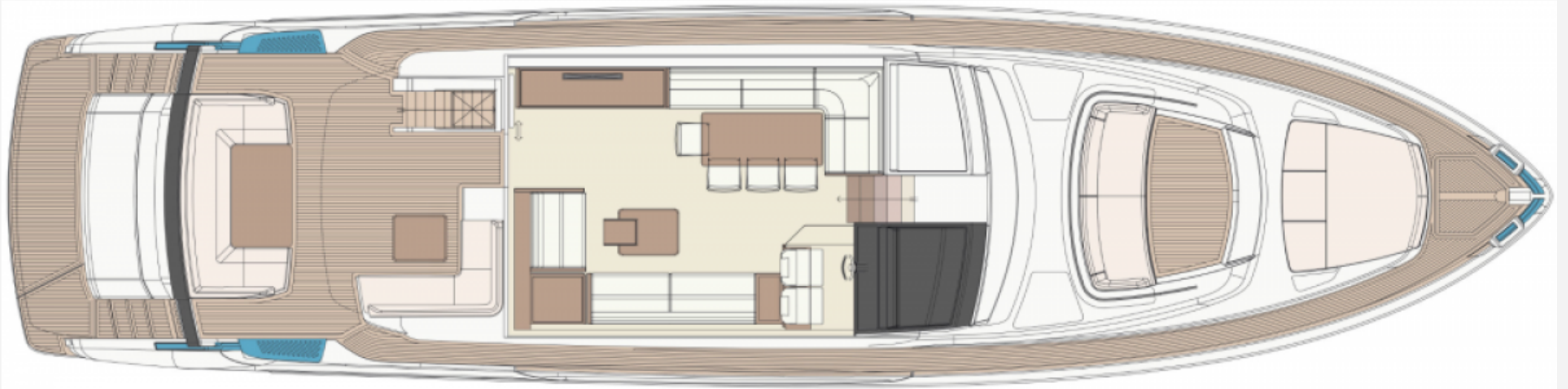
23.25 M / 76'28"



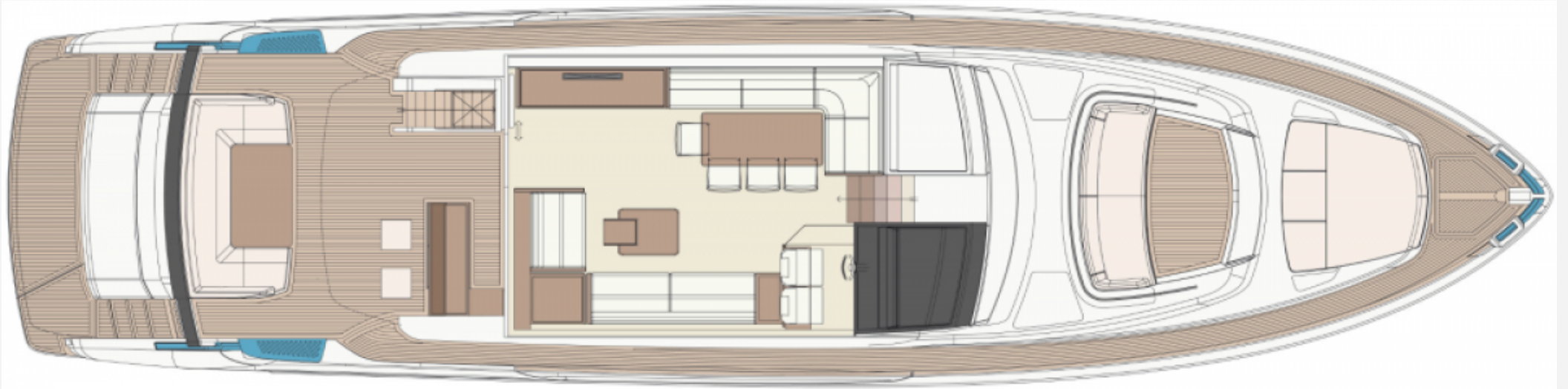
23.25 M / 76'28"



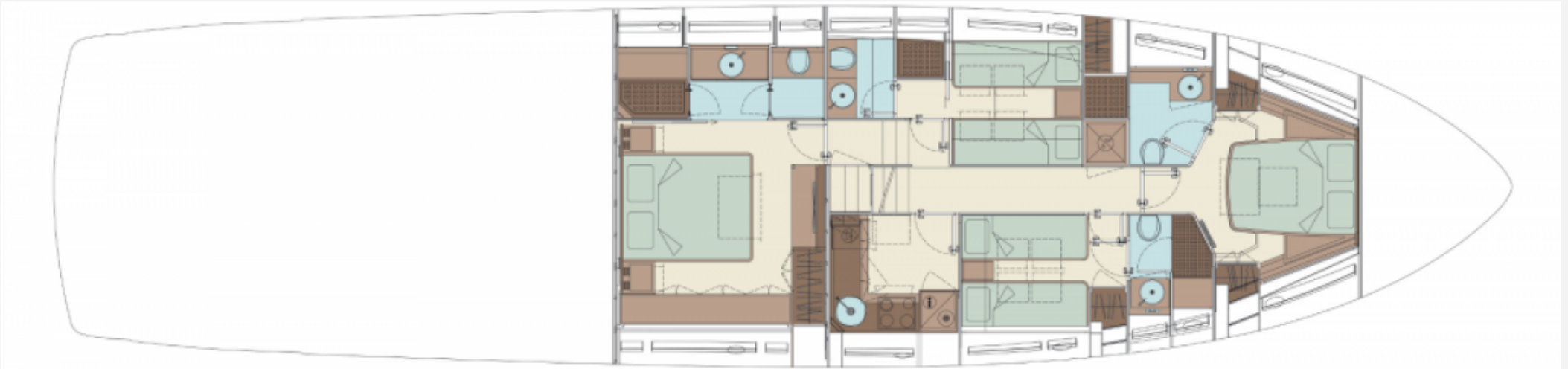
23.25 M / 76'28"



23.25 M / 76'28"



23.25 M / 76'28"



23.25 M / 76'28"

