

26.95 M / 88'42"



## CARACTÉRISTIQUES PRINCIPALES

<b>Length</b>	26.95 M / 88'42"
<b>Beam</b>	6.22 M / 20'41"
<b>Draft</b>	2.00 M / 6'55"
<b>Displacement</b>	70.00 tonnes

# POA

\* Conversion approximative

🏠 Adresse:

3 Rue de la Loge L-1945 Luxembourg

📞 Contact

Thomas Peltier • P: +352.27.40.99.90 • M: +352.621.326.323

✉ E-mail:

t.peltier@seastemia.com

## SPÉCIFICATIONS

## CERTIFICATION

<b>Category</b>	A	<b>Compliance</b>	B + F + AA (SOUND EMISSION) RINA S.P.A.
-----------------	---	-------------------	---

## DIMENSIONS

<b>Length</b>	26.95 M / 88'42"	<b>Beam</b>	6.22 M / 20'41"
<b>Draft</b>	2.00 M / 6'55"	<b>Displacement</b>	70.00 tonnes

## MACHINERY

<b>Engine Maker</b>	MAN	<b>Drive</b>	V-Drive
<b>Number of Engines</b>	2	<b>Propulsion Mode</b>	Diesel
<b>Engine(s) power</b>	2,000.00 hp	<b>Engine(s) model</b>	V12-2000

## PERFORMANCES

<b>Cruising Speed</b>	27.00 noeuds	<b>Max Speed</b>	32.00 noeuds
-----------------------	--------------	------------------	--------------

26.95 M / 88'42"

TANKAGES

<b>Fuel</b>	7,000.00 litres / 1,848.00 US gals	<b>Water</b>	1,400.00 litres / 369.60 US gals
-------------	------------------------------------	--------------	----------------------------------

26.95 M / 88'42"





26.95 M / 88'42"



26.95 M / 88'42"





26.95 M / 88'42"



26.95 M / 88'42"





26.95 M / 88'42"



26.95 M / 88'42"





26.95 M / 88'42"



26.95 M / 88'42"

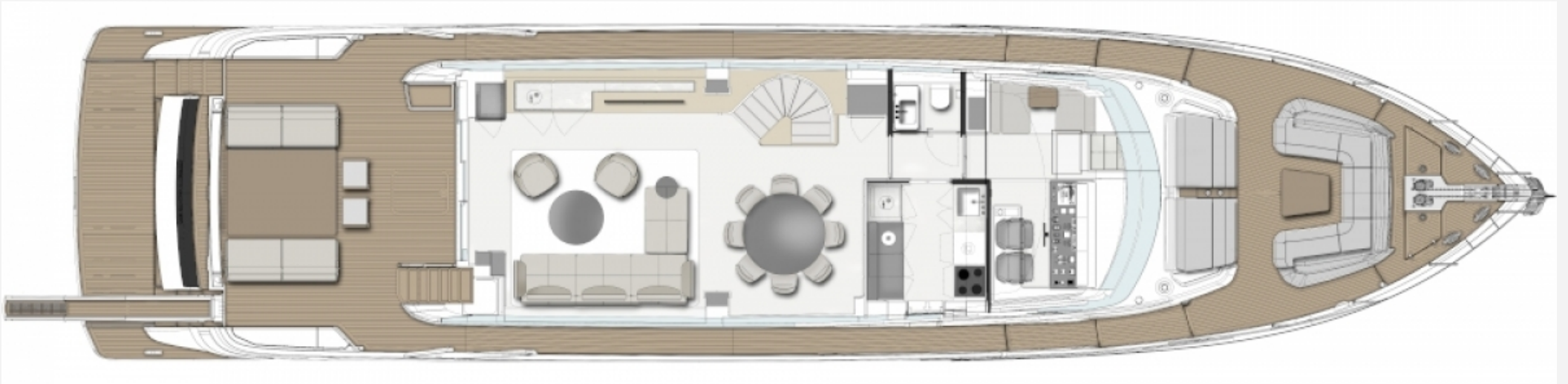




26.95 M / 88'42"



26.95 M / 88'42"





26.95 M / 88'42"



26.95 M / 88'42"

