

26.97 M / 88'48"



CARACTÉRISTIQUES PRINCIPALES

Length 26.97 M / 88'48"

Beam 7.33 M / 24'5"

Displacement 96.00 tonnes

POA

* Conversion approximative

🏠 Adresse:

3 Rue de la Loge L-1945 Luxembourg

📞 Contact

Thomas Peltier • P: +352.27.40.99.90 • M: +352.621.326.323

✉ E-mail:

t.peltier@seastemia.com

26.97 M / 88'48"

SPÉCIFICATIONS

DIMENSIONS

Length	26.97 M / 88'48"	Beam	7.33 M / 24'5"
Displacement	96.00 tonnes		

MACHINERY

Engine Maker	MAN	Number of Engines	2
Propulsion Mode	Diesel	Engine(s) power	1,550.00 hp
Engine(s) model	MAN V12 - 1550 or optionally MAN V12 - 1800		

PERFORMANCES

Cruising Speed	17.00 noeuds	Max Speed	22.00 noeuds
-----------------------	--------------	------------------	--------------

TANKAGES

Fuel	11,500.00 litres / 3,036.00 US gals	Water	1,800.00 litres / 475.20 US gals
-------------	-------------------------------------	--------------	----------------------------------

26.97 M / 88'48"



26.97 M / 88'48"



26.97 M / 88'48"



26.97 M / 88'48"



26.97 M / 88'48"



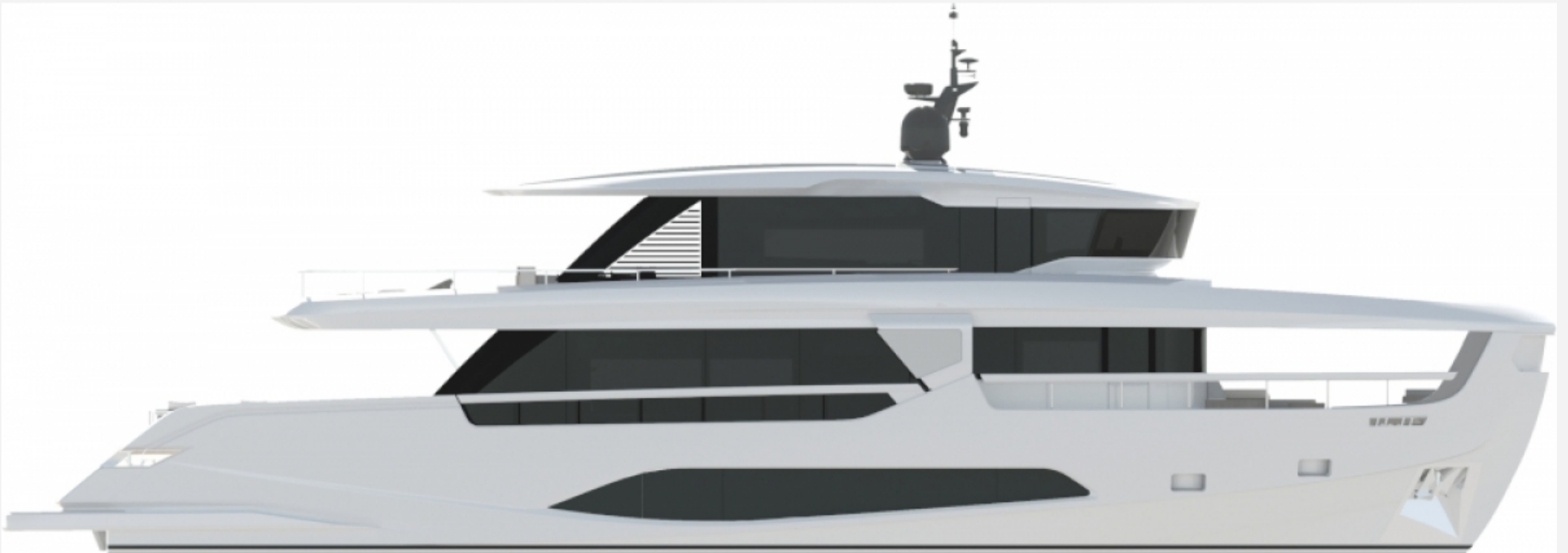
26.97 M / 88'48"



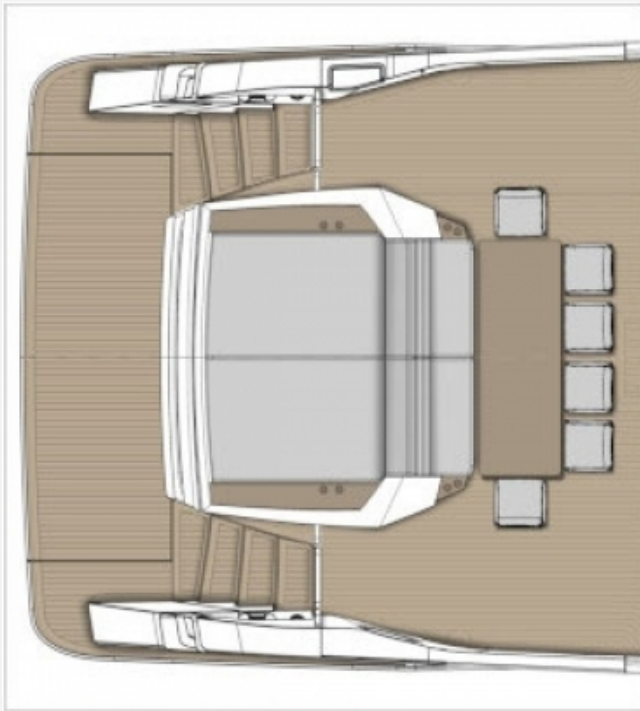
26.97 M / 88'48"



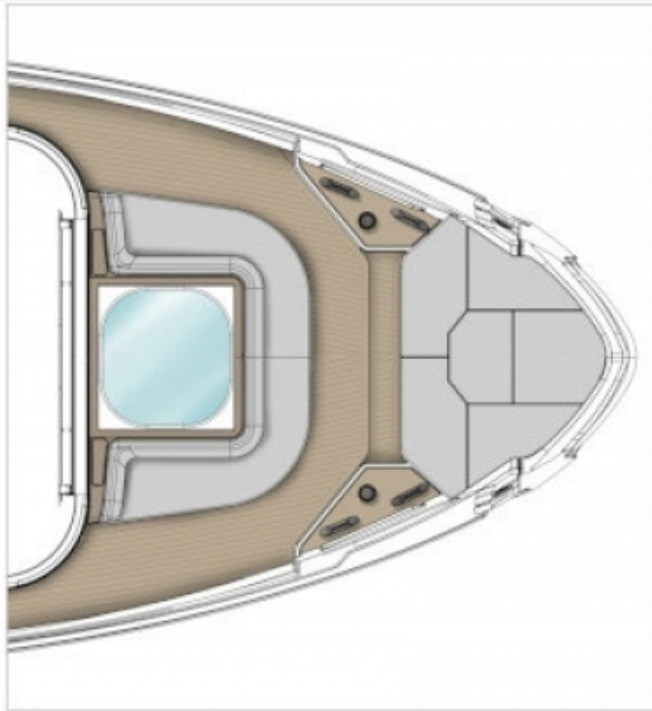
26.97 M / 88'48"



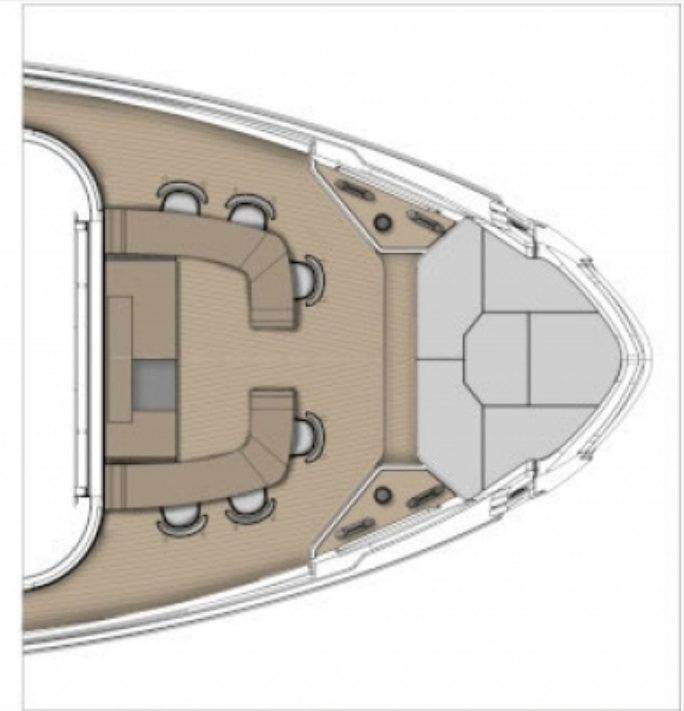
26.97 M / 88'48"



COCKPIT AREA OPT



ALL SEASON TERRACE OPT 1



ALL SEASON TERRACE OPT 2

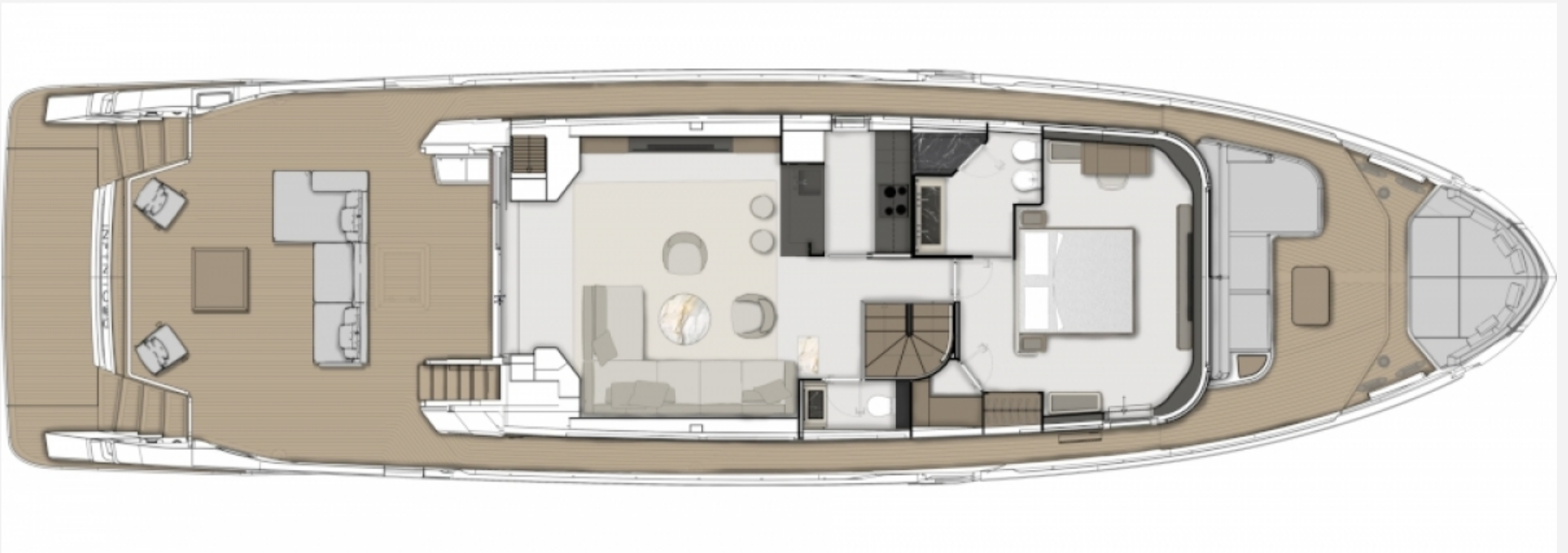
26.97 M / 88'48"



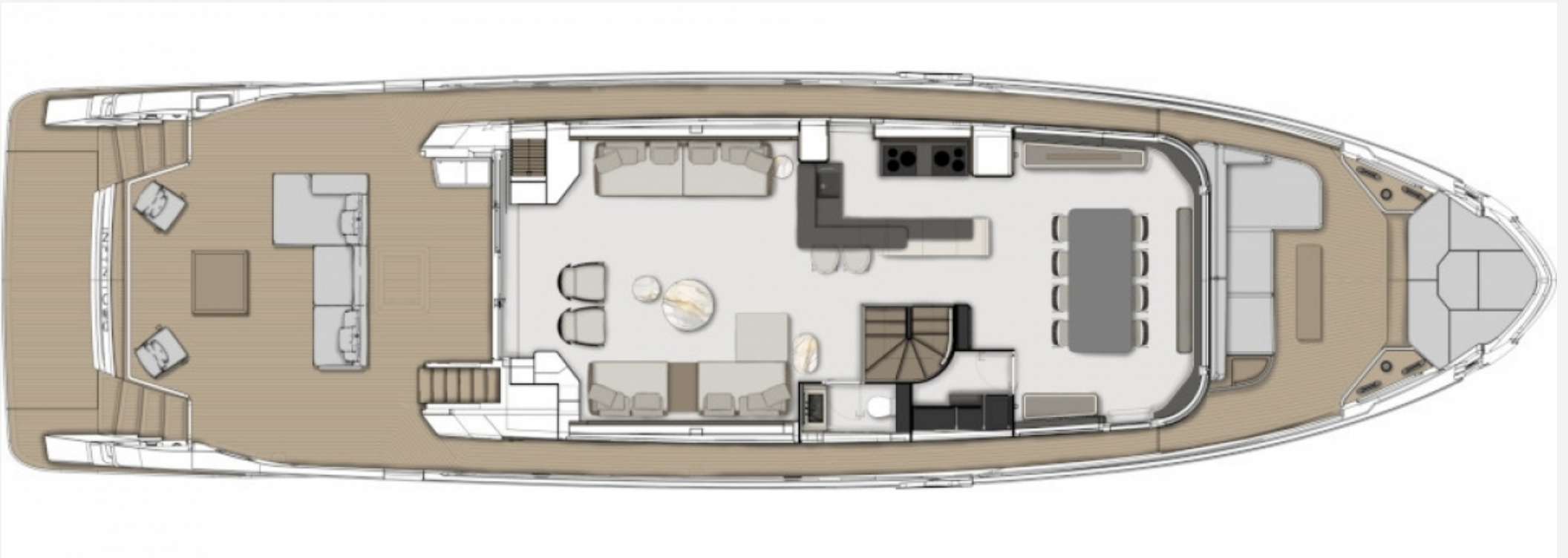
26.97 M / 88'48"



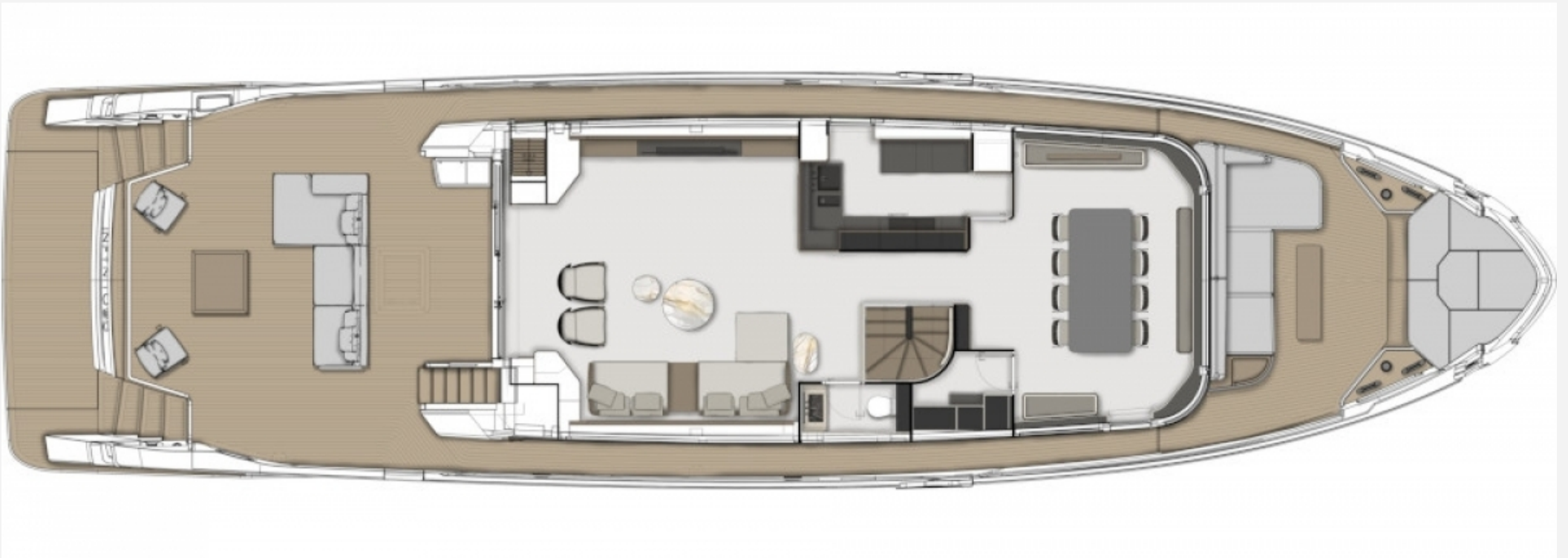
26.97 M / 88'48"



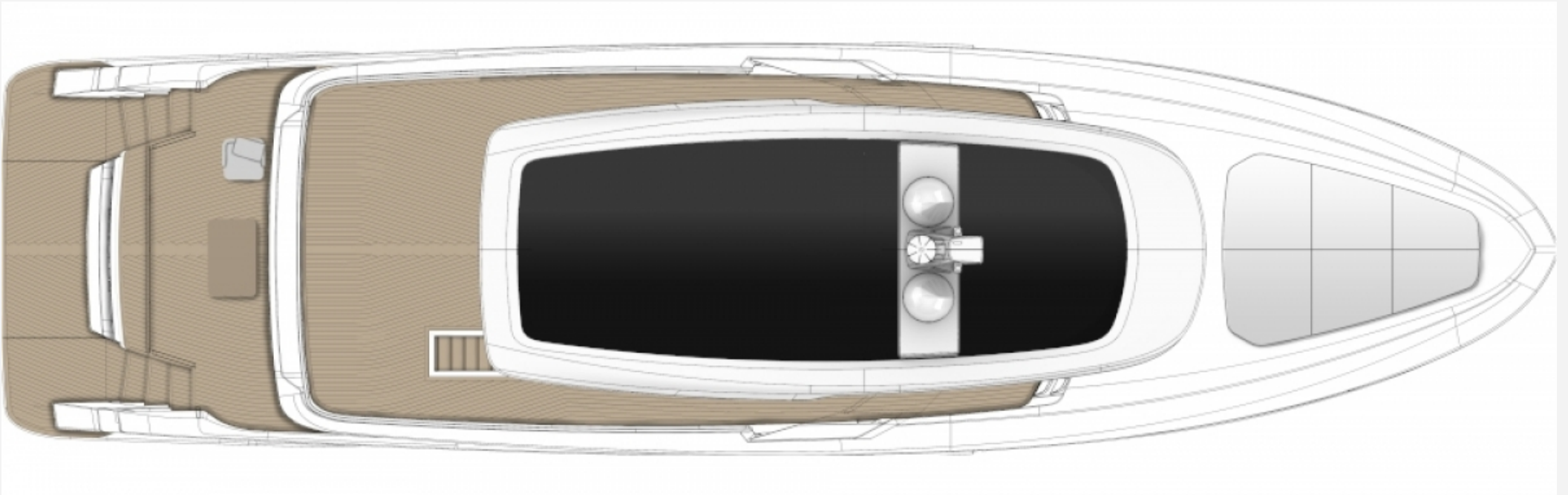
26.97 M / 88'48"



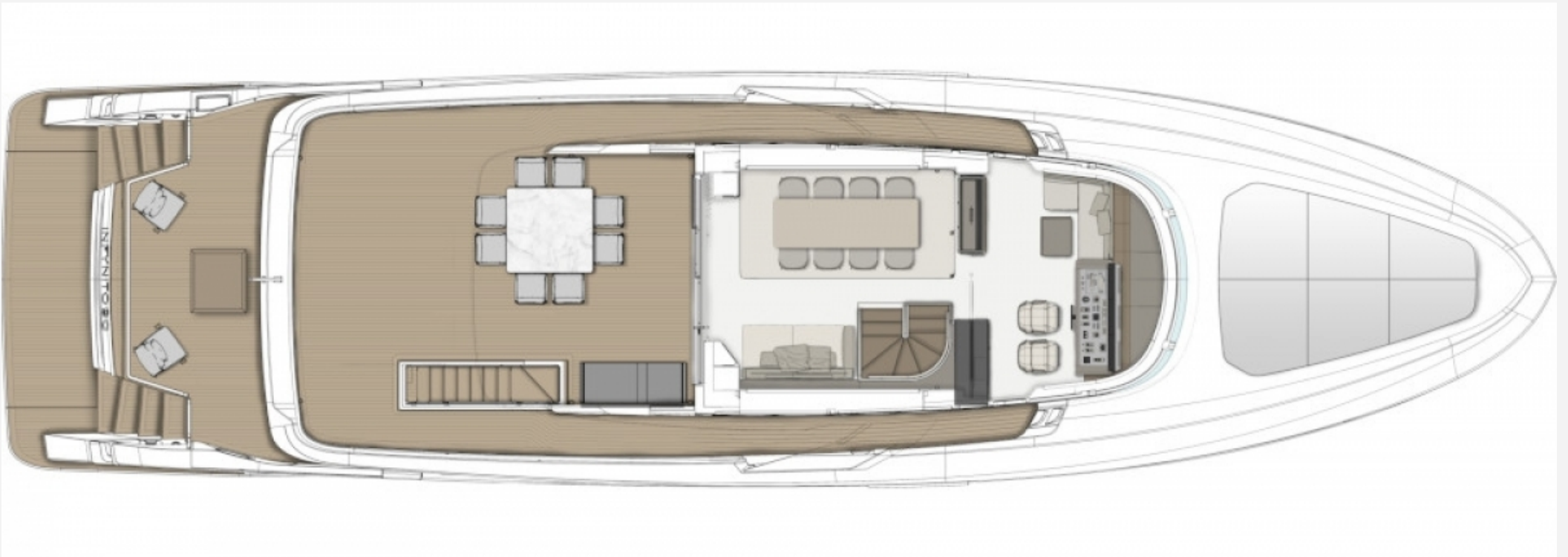
26.97 M / 88'48"



26.97 M / 88'48"



26.97 M / 88'48"



26.97 M / 88'48"

