

28.97 M / 95'4"



## CARACTÉRISTIQUES PRINCIPALES

**Length** 28.97 M / 95'4"


**Beam** 6.76 M / 22'17"

**Draft** 2.30 M / 7'54"

**Displacement** 85.00 tonnes

# POA


\* Conversion approximative

 Adresse:

3 Rue de la Loge L-1945 Luxembourg

 Contact

Thomas Peltier • P: +352.27.40.99.90 • M: +352.621.326.323

 E-mail:

t.peltier@seastemia.com

## SPÉCIFICATIONS

## CERTIFICATION

<b>Certification</b>	RINA	<b>Category</b>	A
<b>Compliance</b>	(2013/53/Eu) + modules B+F+A1 (sound emissions)		

## DIMENSIONS

<b>Length</b>	28.97 M / 95'4"	<b>Beam</b>	6.76 M / 22'17"
<b>Draft</b>	2.30 M / 7'54"	<b>Displacement</b>	85.00 tonnes

## MACHINERY

<b>Engine Maker</b>	MAN	<b>Drive</b>	V-Drive
<b>Number of Engines</b>	2	<b>Propulsion Mode</b>	Diesel
<b>Engine(s) power</b>	2,000.00 hp	<b>Engine(s) model</b>	V12 2000/ (opt2200)

## PERFORMANCES

<b>Cruising Speed</b>	23.00 noeuds	<b>Max Speed</b>	27.00 noeuds
-----------------------	--------------	------------------	--------------

28.97 M / 95'4"

## TANKAGES

<b>Fuel</b>	9,000.00 litres / 2,376.00 US gals	<b>Water</b>	1,320.00 litres / 348.48 US gals
-------------	------------------------------------	--------------	----------------------------------

## ACCOMODATIONS

<b>Sleeps</b>	10 guests	<b>Courette</b>	2 simple, 8 double
<b>Bathroom</b>	5	<b>Crew</b>	4
<b>Crew Berths</b>	4		

28.97 M / 95'4"



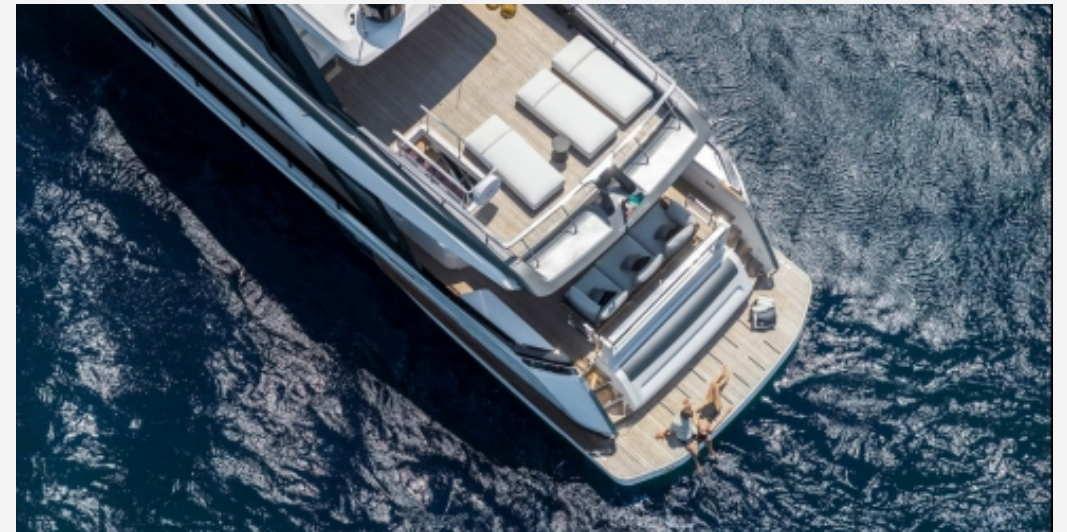
28.97 M / 95'4"



28.97 M / 95'4"



28.97 M / 95'4"



28.97 M / 95'4"





28.97 M / 95'4"



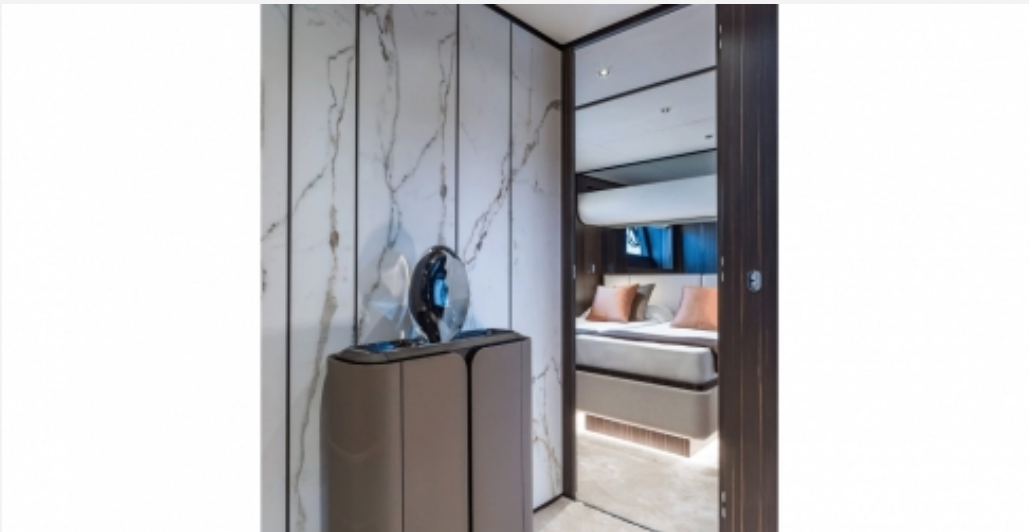
28.97 M / 95'4"



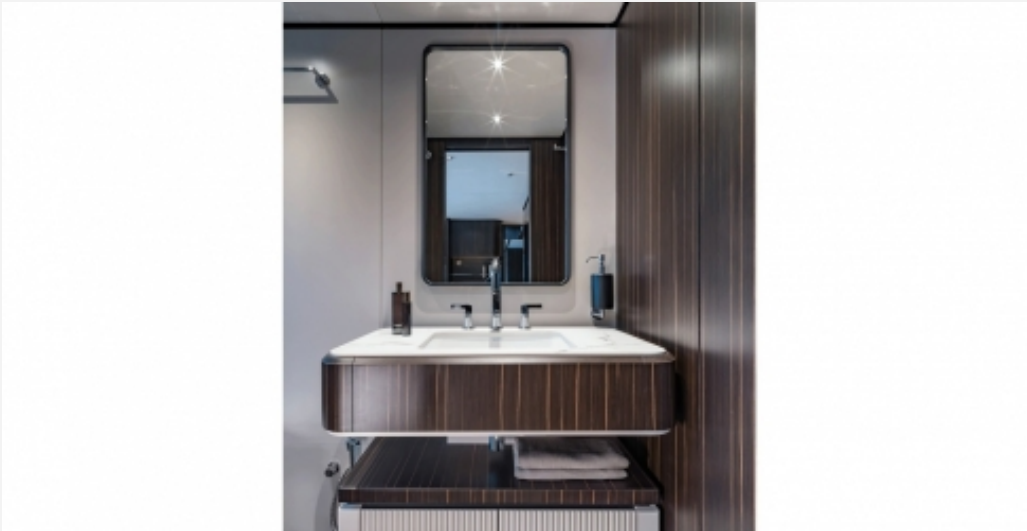
28.97 M / 95'4"



28.97 M / 95'4"



28.97 M / 95'4"



28.97 M / 95'4"



28.97 M / 95'4"



28.97 M / 95'4"

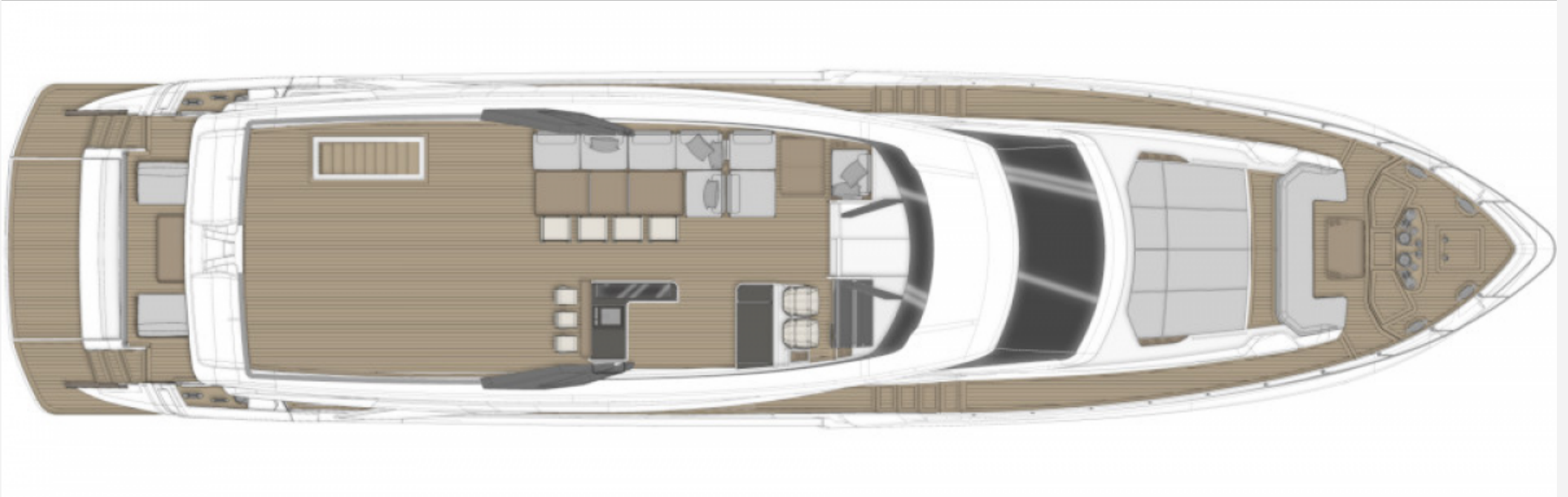




28.97 M / 95'4"



28.97 M / 95'4"



28.97 M / 95'4"

