

37.50 M / 123'4"



CARACTÉRISTIQUES PRINCIPALES

Length 37.50 M / 123'4"

Beam 8.44 M / 27'69"

Draft 2.00 M / 6'55"

Displacement 235.00 tonnes

POA

* Conversion approximative

🏠 Adresse:

3 Rue de la Loge L-1945 Luxembourg

📞 Contact

Thomas Peltier • P: +352.27.40.99.90 • M: +352.621.326.323

✉ E-mail:

t.peltier@seastemia.com

37.50 M / 123'4"

SPÉCIFICATIONS

DIMENSIONS

Length	37.50 M / 123'4"	Beam	8.44 M / 27'69"
Draft	2.00 M / 6'55"	Displacement	235.00 tonnes

MACHINERY

Engine Maker	Caterpillar	Drive	Shaft
Number of Engines	2	Propulsion Mode	Diesel
Engine(s) power	2,400.00 hp	Engine(s) model	2 X CAT C32B, 2400
Main Generator Power	70.00 KW	Auxiliary Generator Power	70.00 KW

TANKAGES

Fuel	29,700.00 litres / 7,840.80 US gals	Water	6,366.00 litres / 1,680.62 US gals
Grey Water	2,613.00 litres / 689.83 US gals	Black Water	2,998.00 litres / 791.47 US gals

ACCOMODATIONS

Sleeps	12 guests	Courette	4 simple, 4 double
---------------	-----------	-----------------	--------------------

37.50 M / 123'4"

ACCOMODATIONS

Bathroom	6	Crew	8
Crew Berths	7		

37.50 M / 123'4"



37.50 M / 123'4"



37.50 M / 123'4"



37.50 M / 123'4"



37.50 M / 123'4"



37.50 M / 123'4"



37.50 M / 123'4"



37.50 M / 123'4"



37.50 M / 123'4"



37.50 M / 123'4"



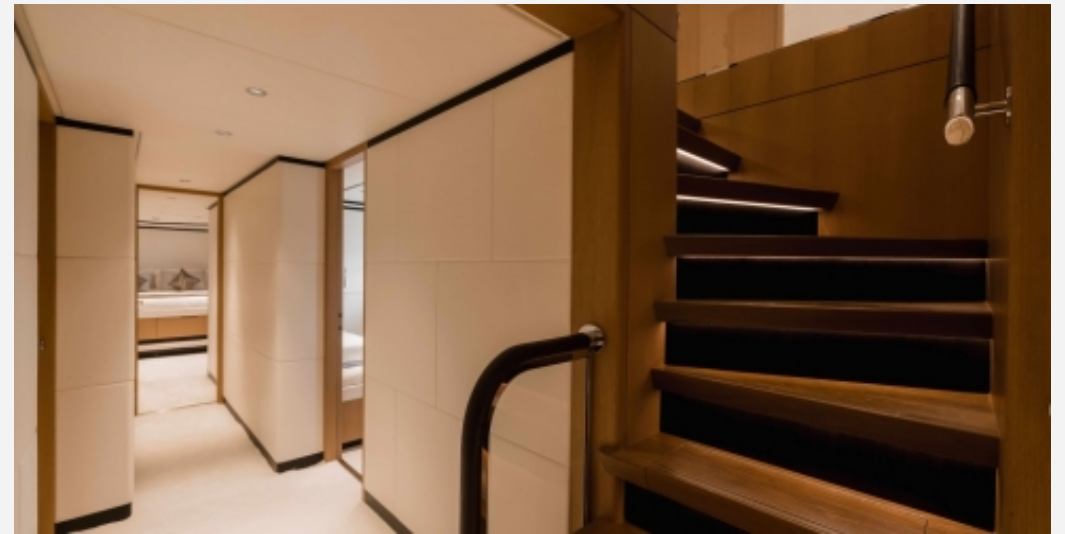
37.50 M / 123'4"



37.50 M / 123'4"



37.50 M / 123'4"



37.50 M / 123'4"



37.50 M / 123'4"



37.50 M / 123'4"



37.50 M / 123'4"

